

NEW FROM SSI! SUMMER 1992 CATALOG UPDATE...

WEAVE

GOT

WHAT'S

NOT!

SSI

DARK • SUN™

HARSH NEW WORLD! HOT NEW ENGINE!

Prepare to take a *quantum leap* in computer AD&D® role-playing – on the most successful new fantasy world ever launched: the DARK SUN™ game world! *SHATTERED LANDS*, first in this next generation of adventuring, delivers state-of-the-art technology, unrivaled game design and an intricate storyline.

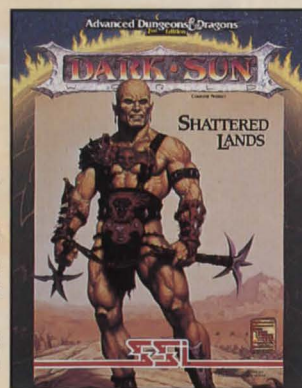
■ **A harsh new world**, brutal and sun-scorched, awaits the party you create. Choose from all-new races with higher levels and multiple classes.

■ **Spectacular full-screen graphics and cinematics** unfold in continuous action – you never leave the screen to go into another mode for combat, inventory and conversation.

■ **A splendid music score and sound effects** truly bring the DARK SUN game world to life!

■ **The full-blown 16-bit engine** delivers smooth animation and game play. Pick up and examine objects, interact with the physical surroundings, converse with characters, battle monsters – all with incredible richness and detail!

And the point-and-click interface gives you quick and easy game play!



IBM (Sept.)

MAC (Feb. '93)

\$79.95
EACH

Clue Book
Available!

By SSI Special
Projects Group.



IBM VGA DISPLAYS



SAIL THE SOLAR WINDS.

PIRATES OF REALMSPACE.

Captain your own Spelljammer space ship in a spectacular AD&D® adventure unlike any before! Recruit officers and crew to man your magic-powered ship. Soar into the ether, explore the planets

of Realmspace and embark on exciting missions. Engage

pirate vessels such as neogi snail warships in real-time combat from a first-person, flight simulator viewpoint. Fire huge bolts from your ship's ballista and bring the enemy to heel. Boarding combat is true AD&D phased battle using weapons and magic. Point-and-click your way through the game. Superb graphics and sound effects heighten the drama. With so many planets to visit and missions to fulfill, every adventure will be different from the last! • IBM \$59.95 (SEPTEMBER) • AMIGA \$59.95 (JANUARY '93) • Clue Book Available!



IBM 256-COLOR VGA DISPLAY

BIG ADVENTURE SMALL PRICE!



Here's your chance to experience the excitement and wonder of ADVANCED DUNGEONS & DRAGONS computer adventuring – at unbeatable prices! These two remarkable collections feature critically acclaimed best-sellers packaged together for the first time.

❖ DRAGONLANCE™ COLLECTOR'S EDITION.

The complete DRAGONLANCE trilogy – *CHAMPIONS OF KRYNN*, *DEATH KNIGHTS OF KRYNN*, and *THE DARK QUEEN OF KRYNN* – in one BIG box! Complete a game, then transfer your characters, with experience levels and attributes intact, to the next in the series and continue your exciting journeys!

And, to make sure you set off on the right foot, we've included an extra bonus – the *CHAMPIONS OF KRYNN CLUE BOOK*, free! • IBM \$69.95 (AUGUST)

❖ AD&D® STARTER KIT.

What better way to start your AD&D adventuring career than with the beginning volumes for three of the greatest series in computer FRP history – *POOL OF RADIANCE*, *GATEWAY TO THE SAVAGE FRONTIER*, and *CHAMPIONS OF KRYNN*. Each is an adventure by itself. But when you're done with these beginning volumes, you can transfer your characters, with experience levels and attributes intact, to the next game in each series. **Special Bonus:** Free Clue Book for each game included! • IBM \$69.95 (SEPTEMBER)



Pilot 42,000 tons of steel with big guns blazing!

When you want an advanced simulator with *real* power, play **GREAT NAVAL BATTLES™: NORTH ATLANTIC 1939-43**. Its state-of-the-art graphics and animation put you on the bridge of the great German or British battleships and cruisers of World War II.

Choose the **CAPTAIN'S VIEW** and steer majestic



ships like the *HMS Hood*; go to full power and watch the action on the screen as 42,000 tons of steel respond to your command. Listen as dramatic sound effects re-create the roar of guns as you fire them. Watch the shells splash in the distance or explode on target. See the flash of enemy guns and feel your ship vibrate as she's hit. Take command even through the toughest North Atlantic storms!

You can also watch the action from the **FLEET VIEW**, an eagle's-eye look at the individual ships of a task force, or **GRAND ADMIRAL VIEW**, a strategic display of your entire navy and all visible enemy vessels on a map of the North Atlantic.

Fight the entire campaign, mini-campaigns or individual battles. All the action happens in real time or you can compress the scale. There's even instant replay.

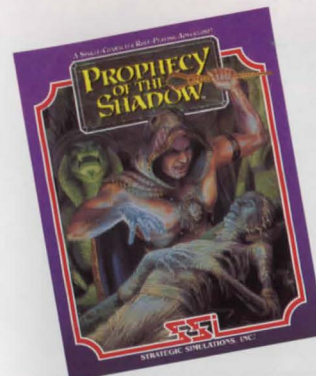
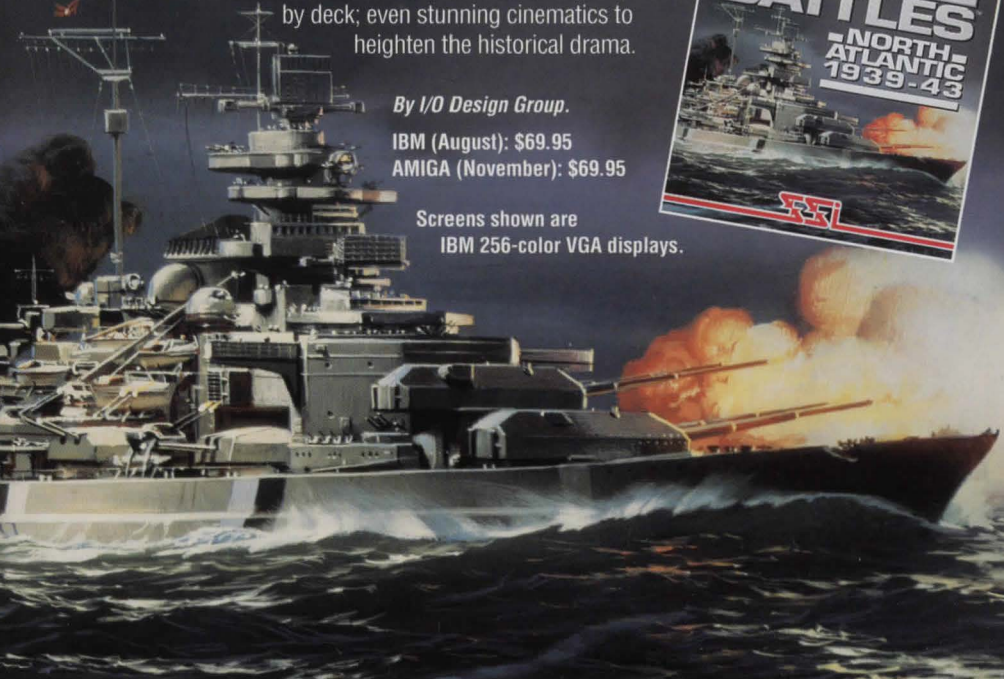
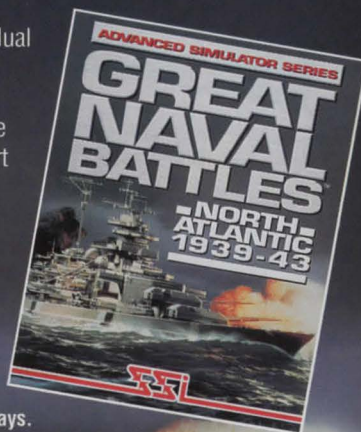
This advanced simulator boasts extensive online ship data and specifications; detailed damage report by deck; even stunning cinematics to heighten the historical drama.

By I/O Design Group.

IBM (August): \$69.95

AMIGA (November): \$69.95

Screens shown are
IBM 256-color VGA displays.



RAISE SOME SPIRITS.

Elevate yourself to a higher level of fantasy gaming and play **PROPHCY OF THE SHADOW**. SSI's latest role-playing adventure boasts stunning digitized art and animation, a dynamic sound-

track and colorful sound effects.

It's fast and easy to play, thanks to point-and-click icon-based commands, graphical inventories and conversation interface. As you search for the way to prevent an ancient prophecy from coming true, you'll cast magic spells, solve puzzles, explore dark dungeons, battle monsters and encounter the long-dead. All of which you'll find quite uplifting. • IBM \$59.95 AVAILABLE NOW • AMIGA \$59.95 (SEPTEMBER) • Clue Book Available!



ULTIMATE EXPANSION DISKS.

For use with TONY LA RUSSA'S ULTIMATE BASEBALL.

Each data disk is a fantastic way to get even more realism, excitement and fun out of TONY LA RUSSA'S ULTIMATE BASEBALL!

► **FANTASY MANAGER DISK:** Draft your own division(s) or league(s). Assign stadiums and ask Tony for advice on a draft choice! Do the draft yourself or let the computer do it (an all-computer draft takes less than half an hour). Millions of computer manager personalities are available for each team. You also have pre-designed manager types based on historical managerial styles. Includes team salaries and expanded printing options.

► **A.L. & A.L. CLASSIC STADIUMS DISK:**

Play in all current 14 A.L. stadiums, 4 A.L. classic stadiums and 1 infield. State-of-the art graphics render the largest, most detailed and accurate stadiums ever!

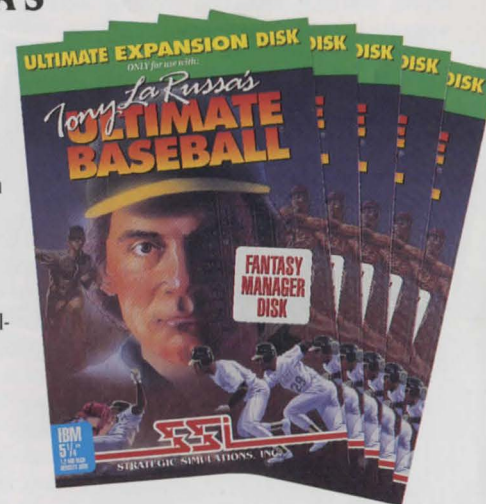
► **N.L. & N.L. CLASSIC STADIUMS DISK:** All 12 current N.L. stadiums, 7 N.L. classic stadiums and 1 infield. Advanced technology render stunning detail and realism!



► **1990 TEAMS DISK:** The final stats from all 1990 teams (12 N.L./14 A.L. rosters). Includes the most-used pitching rotations, batting line-ups and defensive assignments.



► **1991 TEAMS DISK:** The final player stats from all 1991 pro teams (12 N.L. and 14 A.L. rosters). Includes the most-used pitching rotations, batting line-ups and defensive assignments. Each disk sold separately. Available now - \$19.95 each.





THE SUMMONING™

This single-character fantasy role-playing adventure of the first order delivers a mesmerizing, intricate plot with shocking twists and multiple endings. Play inside a huge game filled with mazes, castles, dungeons and secret passage-ways. Teleport to



IBM 256-COLOR VGA DISPLAYS

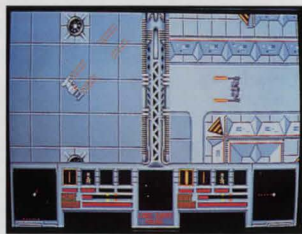
alternate dimensions. Gather clues, unravel puzzles, meet and converse with fascinating NPCs, and battle hordes of incredible monsters. As you explore and discover, the Auto-mapping feature keeps track of the paths of your journeys and lets you print out maps. First-rate graphics, splendid cinematics, and a superb music score and sound effects lend substance and realism to this fantasy world. And, with 30-plus levels, you're guaranteed over 100 hours of breathtaking fun and excitement!

• IBM \$59.95 (SEPTEMBER) • Clue Book available!



CYBER EMPIRES™

For one to five players, this challenging strategy game of world conquest is also an explosive action game of battle between cybernetic juggernauts. Each player starts off with a set amount of money and a country to control. Allocate your wealth to



IBM 256-COLOR VGA DISPLAYS

build combinations of capital buildings, fortresses, cities, and factories for constructing armies of giant cybernetic warriors. All five players (human or computer-controlled) take turns plotting their moves. Then, combat! You can slug it out in true arcade fashion, blasting enemy cyborgs with lasers, neutrino cannons, missiles, and flame throwers. Or ask the computer to resolve every battle quickly and cleanly. No matter which way you choose, you'll have a real *BLAST* playing CYBER EMPIRES!

• IBM \$49.95 (SEPTEMBER) • AMIGA \$49.95 (SEPTEMBER)

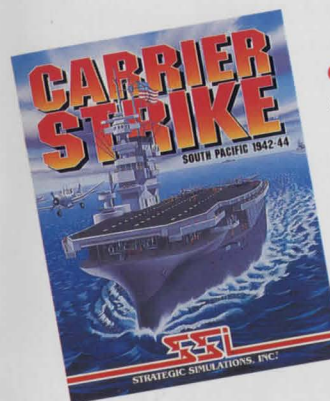


CONFLICT: KOREA™ focuses on the first and most dynamic year of the Korean War. Three historical scenarios let you become General MacArthur or the commander of North Korean Forces. There's also a hypothetical 1995 scenario where the U.S. plays a limited role. Set at the regiment/division level with six levels of difficulty, this simulation is ideal for the novice and battle-hardened wargamer.

• IBM & AMIGA \$59.95 AVAILABLE NOW!



IBM 16-COLOR VGA DISPLAY

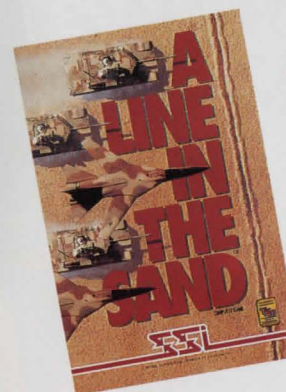


CARRIER STRIKE™ is an all-new tactical carrier combat game that links the 1942-44 battles of the South Pacific into one campaign! As a Carrier Task Force Commander, you can start with the Battle of Coral Sea, then move on to Midway, Eastern Solomons, Santa Cruz and Marianas. The computer keeps track of all the action from battle to battle and also generates an unlimited number of

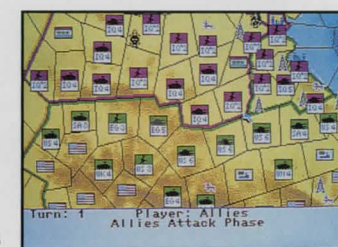
hypothetical scenarios! • IBM \$69.95 AVAILABLE NOW! • **CARRIER STRIKE™** EXPANSION DISK • \$29.95 AVAILABLE NOW FROM SSI



IBM 256-COLOR VGA DISPLAY



A LINE IN THE SAND™ is the only multi-player computer simulation of real and potential wars in the Middle East. Play two historical scenarios based on the recent Iraqi War. Fight two hypothetical scenarios: *Holy War* and *Israel Surrounded*. Express your statesmanship with two diplomatic scenarios. Optional rules, numerous scenarios, and multiple War Aims means no two games will ever play the same! • IBM \$39.95 (SEPTEMBER)



IBM 16-COLOR VGA DISPLAY

ORDERING INFORMATION FOR SSI WARGAMES ONLY:

Visit your retailer or call the SSI Direct Sales Dept. at (408) 737-6800.

To order by mail, send your check or money order to: SSI Direct Sales Dept. 675 Almanor Ave., Suite 201 Sunnyvale, CA 94086-2901

Please specify computer format and include \$4.00 for shipping and handling. CA residents, add applicable sales tax. Allow 1-3 weeks for delivery.

| AD&D Computer Products | IBM® | C-64™/128™ | AMIGA™ | MACINTOSH® | CLUE BOOK |
|------------------------------------|---------------------|-------------|--------------|---------------|-----------|
| AD&D Starter Kit | ▼ ■ \$69.95/640K/6 | | | | Included |
| Champions of Krynn | \$29.95/512K/3 | \$39.95/64K | \$49.95/1Mb | | \$12.95 |
| Curse of the Azure Bonds | \$19.95/512K/3 | \$19.95/64K | \$19.95/1Mb | *\$59.95/1Mb | \$12.95 |
| Dark Sun: Shattered Lands | ▼ ■ \$79.95/640K/11 | | | **\$79.95/1Mb | \$14.95 |
| Death Knights of Krynn | \$29.95/640K/3 | \$49.95/64K | \$49.95/1Mb | | \$12.95 |
| DRAGONLANCE Collector's Edition | ▼ ■ \$69.95/640K/6 | | | | |
| DragonStrike | \$19.95/512K/4 | | \$19.95/512K | | |
| Eye of the Beholder | \$29.95/640K/4 | | \$29.95/1Mb | | \$12.95 |
| Eye of the Beholder II | ■ ♦ \$59.95/640K/8 | | \$59.95/1Mb | | \$14.95 |
| Gateway to the Savage Frontier | ♦ \$49.95/640K/4 | \$49.95/64K | \$49.95/1Mb | | \$12.95 |
| Pools of Darkness | ■ ♦ \$59.95/640K/5 | | \$59.95/1Mb | **\$59.95/1Mb | \$14.95 |
| Pool of Radiance | \$19.95/384K/3 | \$19.95/64K | \$19.95/1Mb | **\$49.95/1Mb | \$12.95 |
| Secret of the Silver Blades | \$19.95/640K/3 | \$19.95/64K | \$19.95/1Mb | **\$59.95/1Mb | \$12.95 |
| Shadow Sorcerer | ♦ \$19.95/640K/6 | | \$19.95/1Mb | | \$12.95 |
| SpellJammer: Pirates of Realmspace | ▼ \$59.95/640K/11 | | \$59.95/1Mb | | |
| The Dark Queen of Krynn | ■ ♦ \$49.95/640K/5 | | \$49.95/1Mb | **\$59.95/1Mb | \$12.95 |
| Treasures of the Savage Frontier | ■ ♦ \$49.95/640K/5 | | \$49.95/1Mb | | \$12.95 |
| War Games | IBM® | C-64™/128™ | AMIGA™ | MACINTOSH® | |
| A Line in the Sand™ | ▼ \$39.95/640K/11 | | | | |
| Carrier Strike™ South Pacific | ▼ ■ \$69.95/640K/10 | | | | |
| Conflict: Korea™ | ▼ \$59.95/640K/10 | | \$59.95/1Mb | | |
| Conflict: Middle East™ | ● \$59.95/512K/2 | | \$59.95/1Mb | | |
| Gettysburg: The Turning Point™ | ● \$59.95/128K/1 | \$59.95/64K | \$59.95/512K | | |
| No Greater Glory™ | ■ ♦ \$69.95/640K/2 | | \$69.95/1Mb | **\$69.95/1Mb | |
| Second Front™ | \$59.95/640K/2 | | \$59.95/1Mb | | |
| Typhoon of Steel™ | | \$14.95/64K | \$14.95/1Mb | | |
| Western Front™ | \$59.95/640K/9 | | | | |
| Fantasy Role-Playing | IBM® | C-64™/128™ | AMIGA™ | MACINTOSH® | CLUE BOOK |
| Prophecy of the Shadow™ | ■ ♦ \$59.95/640K/11 | | \$59.95/1Mb | | \$14.95 |
| The Summoning™ | ▼ ■ \$59.95/640K/11 | | | | \$14.95 |
| Simulators | IBM® | C-64™/128™ | AMIGA™ | MACINTOSH® | |
| Great Naval Battles™ | ▼ ■ \$69.95/640K/11 | | \$69.95/1Mb | | |
| Science Fiction | IBM® | C-64™/128™ | AMIGA™ | MACINTOSH® | CLUE BOOK |
| Countdown to Doomsday | \$19.95/640K/4 | \$19.95/64K | \$19.95/1Mb | | \$12.95 |
| Cyber Empires™ | ▼ \$49.95/640K/11 | | \$49.95/1Mb | | |
| Matrix Cubed | ♦ \$49.95/640K/5 | | | | \$12.95 |
| Renegade Legion: Interceptor® | \$19.95/512K/2 | | \$19.95/1Mb | | |
| Sports | IBM® | C-64™/128™ | AMIGA™ | MACINTOSH® | |
| Tony La Russa's Ultimate Baseball® | ■ ♦ \$29.95/640K/9 | \$19.95/64K | | | |
| MLBPA 1990 Teams Disk | \$19.95 | \$19.95 | | | |
| MLBPA 1991 Teams Disk | \$19.95 | | | | |
| Fantasy Manager Disk | \$19.95 | | | | |
| A.L./A.L. Classic Stadiums Disk | \$19.95 | | | | |
| N.L./N.L. Classic Stadiums Disk | \$19.95 | | | | |

* Color disk available – see offer inside game box. ** Supports color on Macintosh II with color monitor and 2Mb of RAM.

MACINTOSH is a registered trademark of Apple Computer, Inc. **IBM** is a registered trademark of International Business Machines Corp. **C-64/128** and **AMIGA** are trademarks of Commodore Business Machines, Inc. All screen displays shown are from the computer version indicated. Screen shots are only intended to be illustrative of game play. Screen graphics vary considerably between different formats in quality and appearance and are subject to the computer's specifications.

ADVANCED DUNGEONS & DRAGONS, AD&D, FORGOTTEN REALMS, DRAGONLANCE, SPELLJAMMER, DARK SUN and the TSR logo are trademarks owned by and used under license from TSR, Inc. ©1992 TSR, Inc. ©1992 FASA Corporation. ©1992 Strategic Simulations, Inc. All rights reserved.

TO ORDER PRODUCTS WITH PRICES PRINTED IN BLACK:

Visit your retailer or call

1-800-245-4525

(U.S.A. & Canada only) for VISA/MASTERCARD orders. Or send check or money order to:

Electronic Arts/code SSI 53
P.O. Box 7530
San Mateo, CA 94403

(CA residents, add applicable sales tax)

Shipping & handling: 1 item – \$4.00 (add \$1.00 for each additional item); 2-day service, add \$6.00 to final total.

Please specify computer format. Availability dates of new products are subject to change. Please allow 1-3 weeks for delivery.

TO ORDER PRODUCTS WITH PRICES PRINTED IN BLUE:

Visit your retailer or call the SSI Direct Sales Dept. at:

(408) 737-6800

(U.S.A. & Canada only) for VISA/MASTERCARD orders. Or send check or money order to:

SSI Direct Sales
675 Almanor Ave., Suite 201
Sunnyvale, CA 94086-2901

(CA residents, add applicable sales tax)

Shipping & handling: \$4.00. Please specify computer format. Allow 1-3 weeks for delivery.

U.S. and Canadian orders only.

Customers outside the U.S. and Canada should contact their local distributor or call SSI at 1-408-737-6800 for further information. All prices are in U.S. dollars. Availability dates of new products are subject to change.

IBM USERS:

IBM PC products are available with 5¼" or 3½" disks (specify when ordering).

- = 5¼" disks only.
- ♦ = 5¼" disks are High Density.
- = Hard drive required.
- ▼ = 5¼" and 3½" disks are High Density.

Type of color card required:

- 1 = CGA 2 = CGA & EGA
- 3 = CGA, EGA & TANDY 16 COLOR
- 4 = CGA, EGA, MCGA, VEGA & TANDY 16 COLOR
- 5 = EGA, VEGA & TANDY 16 COLOR
- 6 = CGA, EGA, VEGA & TANDY 16 COLOR
- 7 = EGA 8 = EGA, MCGA & VEGA 9 = EGA & VEGA
- 10 = CGA, EGA & VEGA 11 = VEGA