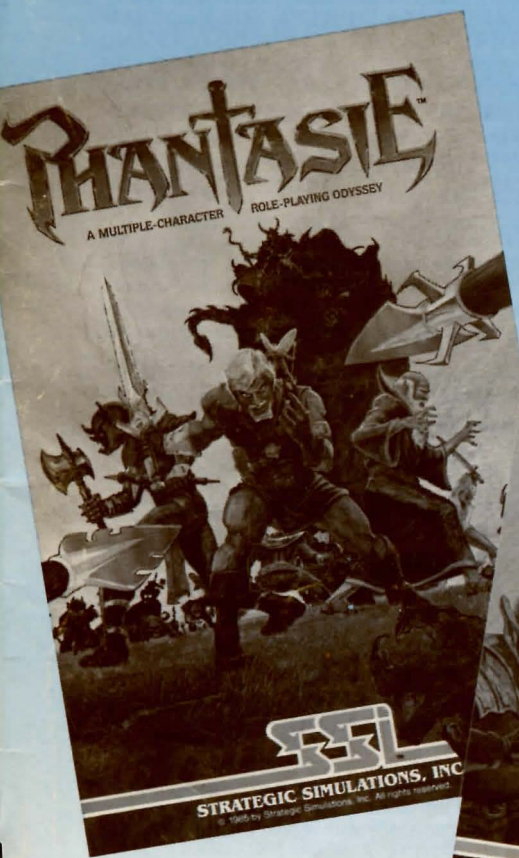


PHANTASIE I and PHANTASIE II RULEBOOK



- Contains rules for:
- Apple® II series
 - Commodore™ 64/128
 - Atari® 800 series
 - Atari® 520 ST
 - Macintosh®

LIMITED WARRANTY

Strategic Simulations, Inc. ("SSI") warrants that the diskette on which the enclosed program is recorded will be free from defects in materials and workmanship for a period of 30 days from the date of purchase. If within 30 days of purchase the diskette proves defective in any way, you may return it to Strategic Simulations, Inc., 1046 N. Rengstorff Ave., Mountain View, CA 94043 and SSI will replace it free of charge. In addition, if the diskette proves defective at any time after the first 30 days, return the diskette to SSI and SSI will replace it for a charge of \$10.00. Please allow about four weeks for delivery.

SSI MAKES NO WARRANTIES, EITHER EXPRESS OR IMPLIED, WITH RESPECT TO THE SOFTWARE PROGRAM RECORDED ON THE DISKETTE OR THE GAME DESCRIBED IN THIS RULE BOOK, THEIR QUALITY, PERFORMANCE, MERCHANTABILITY OR FITNESS FOR ANY PARTICULAR PURPOSE. THE PROGRAM AND GAME ARE SOLD "AS IS." THE ENTIRE RISK AS TO THEIR QUALITY AND PERFORMANCE IS WITH THE BUYER. IN NO EVENT WILL SSI BE LIABLE FOR DIRECT, INDIRECT, INCIDENTAL, OR CONSEQUENTIAL DAMAGES RESULTING FROM ANY DEFECT IN THE PROGRAM OR GAME EVEN IF SSI HAS BEEN ADVISED OF THE POSSIBILITY OF SUCH DAMAGES. (SOME STATES DO NOT ALLOW THE EXCLUSION OR LIMITATION OF IMPLIED WARRANTIES OR LIABILITY FOR INCIDENTAL OR CONSEQUENTIAL DAMAGES, SO THE ABOVE LIMITATION OR EXCLUSION MAY NOT APPLY TO YOU.)

The enclosed software program and this Rule Book are copyrighted. All rights are reserved. This Rule Book may not be copied, photographed, reproduced, or translated or reduced to any electrical medium or machine-readable form, in whole or in part, without prior written consent from SSI. The program accompanying this Rule Book may be copied, by the original purchaser only, as necessary for use on the computer for which it was purchased.

© 1986 by Strategic Simulations, Inc.
All Rights Reserved.

If you are unable to make a backup copy of your disk (most of our games have some form of copy-protection), you may purchase a backup disk from SSI for \$10 plus \$2 for shipping and handling. California residents, add applicable sales tax.

What to do if you have a defective disk

Each of our games undergoes extensive playtesting prior to its release. Through this process we hope to uncover, and correct, any errors in programming. However, due to the complex nature of our simulations, some program errors may go undetected until after publication. In addition to errors in the program, there are occasionally problems with the disk itself. We experience the industry standard of approximately a 3 to 5% failure rate of duplicated disks. Before assuming that a disk is defective, make sure to check your disk drive. Up to 95% of the disks returned to us as defective will run fine on our computer systems. Often the problem is with a disk drive that needs servicing for alignment, speed, or cleaning.

Should you have a defective disk, please return the disk only (keep all other parts of the game) to our Customer Support Department, along with a note describing the problem you have encountered. A replacement disk will be provided upon our receipt of the defective disk.

Should you uncover an error in the program, return both your game disk and any "save game" disks to our Customer Support Department. Please enclose a description of what was taking place in the game when the error occurred. Upon correction of the program error, we will return an updated disk to you.

Always make sure to include your name, address, and daytime telephone number with any correspondence. We will do our best to see that any problems are corrected as soon as possible.



TABLE OF CONTENTS

PHANTASIE I: THOLIE'S TALE	1
PHANTASIE II: NIKADEMUS' REVENGE	2
PHANTASIE I and PHANTASIE II GENERAL RULES	3
ADVENTURERS' CHARACTERISTICS	3
Races • Classes (Professions) • Individual Attributes Interaction of Characteristics	
TOWNS: STARTING (AND ENDING)	4
Town Menu: Go To • Town Menu: Other Options	
ADVENTURES	8
Wilderness Travel • Dungeon Exploration	
ENCOUNTERS	9
Melee • Mortality and Hit Points • Monsters	
MAGIC	11
Spell Descriptions • Spells by Class and Level	
TREASURES	14
Combat Equipment • Potions • Scrolls • More Treasures	
PHANTASIE I and PHANTASIE II COMPUTER-SPECIFIC RULES ..	17
APPLE® II SERIES	17
Loading the Game • Initial Menu Commands • Town Menu Town Menu: Other Options • Adventure Commands Encounter Commands • Saving a Game • Utility Commands	
COMMODORE™ 64/128	20
Loading the Game • Initial Menu Commands • Town Menu Town Menu: Other Options • Adventure Commands Encounter Commands • Saving the Game • Utility Commands	
ATARI® 800 SERIES	24
Loading the Game	
ATARI® 520 ST	24
Loading the Game • Initial Menu Commands • Town Menu Town Menu: Other Options • Adventure Commands Encounter Commands • Saving the Game • Utility Commands	
MACINTOSH®	26
Loading the Game • Saving a Game • Utility Commands	
PHANTASIE II UPDATED RULES	27



PHANTASIE I: THOLIE'S TALE

Newly arrived on the Isle of Gelnor, an adventurer entered the remote town of Pelnor. From the deteriorating condition of the once-prosperous shops, it was clear that things were amiss — just the place where a courageous person might seek a worthy quest.

The adventurer hailed a passing citizen. "Where might I find information about your town and land?"

Looking furtively over his shoulder, the man tersely replied, "Ask for Tholie at the inn," before scurrying away.

Sure enough, the adventurer found the town's storyteller sitting at the back of the smoky, dimly lit commonroom.

"Hail," greeted the adventurer, as he took a seat on the rough-hewn bench. "I've come to Gelnor to seek my fortune. Can you tell me the tales of this land?"

"Why certainly," said the old gnome. He waited for the adventurer to buy him a tankard of brew and a meatpie before commencing his tale in a soft sing-song voice.

"In the beginning, there was a barren vastness, filled only with stars and light, and it was called the Astral Plane.

"Within this vastness, a place was created wherein dwelt Zeus and his followers. The magical River Styx flowed round it all, and it was called the Olympic Plane.

"Next, the earth and all things on it, living and dead, were created, and it was called the Material Plane—"

"I already know the legends of how the world began!" interrupted the adventurer. A look of disgust and disbelief made its way across the youthful face. "I want to know about Gelnor and what's happening now. Are there adventures, fortunes, for the likes of me?"

"Ha!" Tholie briskly retorted. "Ever heard of the evil ones, called Black Knights? There are adventures a-plenty with them, forsooth!"

The adventurer face lit up, and he leaned toward the storyteller. "Yes! Tell me about the Black Knights!"

Tholie continued, "The Isle of Gelnor is divided by a chain of mountains into two regions. The west is the traditional domain of human and humanoid beings — with a few renegade orcs and lizard men — dedicated to order and goodness; the east is inhabited by more exotic creatures — dragons, trolls, and giants. These regions have been waging war throughout the history of this great land. Pelnor, the town we are now in, lies in the northwest corner. . . ."

"Black Knights! What about the Black Knights?" demanded the adventurer, interrupting once again.

"Patience!" roared Tholie. His fist banged the table. "I'm getting there!"

"Since the Great Invasion by the evil sorcerer Nikademus, the Isle of Gelnor has been terrorized by his merciless Black Knights. (The citizens of this land hold such fear and enmity for these intruders that it has even overshadowed their hatred for each other.)

"To maintain their reign of terror, the Black Knights travel from town to town, demanding sacrifices and homage. Though they travel in small bands, no Gelnorian can yet claim to have defeated one.

"Any unfortunates who are espied by these evil ones must surrender all their money or die. Worse still, the Black Knights may bring the wrath of the gods upon those who oppose them. Few are willing to take the risk."

"Defeating the Black Knights and destroying Nikademus is just the quest I need to win my fame and fortune," exclaimed the adventurer. "Where can I find them?"

"No one knows where Nikademus can be found, but you can start with the Black Knights. You're bound to run into them if you travel in Gelnor."

Jumping up, the adventurer turned to leave. "I shall gather a band of fellow seekers at the adventurer's Guild forthwith."

"A few words of advice," Tholie called out. "Whatever your success, it is rumored that new Black Knights are spawned in a fortress somewhere in Gelnor. Godspeed, and may your sword be swift and the gods be with you."

PHANTASIE II: NIKADEMUS' REVENGE

Ferronrah, an island of great beauty and magic, lies just south of the Isle of Gelnor. Once a metropolis with a thriving trade industry and a major naval power, it now appears to be under some grave calamity. A mysterious cloud hangs over the island — and no one has left or entered the island since the cloud first appeared, 40 years ago.

In a small fishing boat just off the coast of Gelnor, an adventurer studies the dark cloud over Ferronrah. His companion, an old, old man, skillfully hauls in his net of fish. "On my mother's grave, that is the work of Nikademus," he mutters.

"What? Nikademus?" the adventurer asks.

"Aye, an evil sorcerer — the one that nearly destroyed my beloved Gelnor. 'Tis a wicked, beastly time on Ferronrah, you can be sure 'o that. No one leaves the island, but rumours drift here. Ferronrah once had the prettiest fleet of boats I ever saw — sleek and fast — all gone now. The monsters destroyed them, the bloody, g—"

"Never mind the boats, man!" the adventurer exclaims. "What about the people? Where are they?"

"No one knows for sure, but it seems Nikademus has acquired new slaves. There was a message — now this has been passed through many lips — that the slaves are being forced to produce weapons. They say Nikademus is planning to invade other lands."

The adventurer leans forward. "How can you be so sure it's the work of Nikademus?"

"I know a sorcerer when I see one!" cries the old man. "One night a few years back, I was fishing off the coast of Ferronrah near Pippicott. A great sou'wester caught me and pulled me toward Pippicott and nearly capsized my bonnie ship. After the storm quieted, I started to sail home, but suddenly my legs buckled and my eyes misted over. I could na' eat 'o drink. And over my boat lay the cloud, the one you see at Ferronrah now." The adventurer studies the cloud again and feels the hair raise on his neck.

"I drifted for nearly a week, sure I would die. Then one morning, I drifted clear of the cloud. I think I lived because of my time with the Pippicott Monk brotherhood. They taught me a spell or two, and I could handle a staff with the best of them. But some of the old strength must have been with me — that and the fact that Nikademus had other work to do," he said darkly.

The old man's rheumy eyes look hard at the adventurer. "I'm too old to match swords with Nikademus. He'll only be conquered by a person of great bravery, strength, and valour — not by some young milksop like you."

The adventurer leaps to his feet, nearly flipping the boat in his indignation. "A milksop! Why, I'm the finest adventurer alive! My sword is like lightning and my spells would wither even Nikademus! I ought to cut your throat for that insult, old man. Instead, I'll prove to you my cunning and skill. I shall free Ferronrah from Nikademus's evil power."

"The way to Ferronrah is fraught with peril," warns the old man, his eyes reflecting some inner amusement. "Are you sure?"

"I am ready."

Quietly, the old man turns the boat, its bow pointing to Ferronrah. He begins to row. The black cloud looms ever nearer.



PHANTASIE I and PHANTASIE II GENERAL RULES

The following pages (3 - 16) describe the general rules, player hints, and characteristics of PHANTASIE and PHANTASIE II. For specific information on loading the game, movement commands, and menus pertaining to your computer, consult the Table of Contents.

ADVENTURERS' CHARACTERISTICS

Adventurers, who can be created in the Guilds of each town, come in a variety of races and classes (professions). In addition, each adventurer has a set of attributes. Race, class, and attributes combine to make each character a unique individual.

RACES

Race refers to a character's biological species. In PHANTASIE, adventurers can be selected from the following races:

HUMANS stand between 5½ to 6 feet tall and tend to be equally good at most professions.

DWARVES are shorter and stouter than humans. They have great strength and constitution (their brawn makes up for their lack of brain).

ELVES are an attractive race, with lithe, slightly-smaller-than-human bodies. They have higher-than-average dexterity and intelligence, but less strength.

GNOMES are like dwarves, only shorter. While not quite as strong, they do demonstrate greater dexterity.

HALFLINGS are small, like dwarves, but not as stout; they have greater mental power and less physical power.

RANDOM CREATURES are generally disliked by humans, so they must pay hefty training fees. They can only be thieves or fighters. When you select "Random Creature," your character will be chosen from one of the following:

- **Gnolls** are very strong, tall, dog-faced humanoid covered with fuzzy, yellow-brown hair.

- **Goblins**, very dexterous and ugly creatures, stand about 4 feet tall. They have large fangs, pointed ears, and foul breath.

- **Kobolds** are small, old, dwarvish types, about 2 feet tall with gnarled faces. They have low strength but high dexterity and constitution.

- **Lizard Men** stand about 7 feet tall. Though humanoid, they are reptilian in appearance with scales along their bodies, a heavy tail (useful in fighting), claws, and a forked tongue. They are as strong as gnomes but not as bright, and they have good swimming skills.

- **Minotaurs** look like humans with a bull's head and tail. They have great strength.

- **Ogres** are large (8 feet), ugly humanoids, with squashed noses and protruding jaws. They are one of the strongest, but dimmest witted, of the races.

- **Orcs** are ugly goblin-types, and they are strong, with good constitutions.

- **Pixies** are tiny fairy creatures (2 feet tall), with pointed ears and transparent wings. Their dexterity and intelligence run high.

- **Sprites** are charming, sociable, fairy-like creatures. Because of their great dexterity and lack of strength, they make better thieves than fighters.

- **Trolls** — with their thick, green, leathery skin — are renowned for their height (7 feet), strength, clumsiness, and stupidity.

CLASSES (Professions)

Class refers to an adventurer's profession or occupation. You can choose from among six classes:

FIGHTERS perform best in combat. Humans, dwarves, and random creatures make good fighters.

MONKS are average in combat, but they know combat spells and have some thieving skills. Humans, elves, and hobbits do well.

PRIESTS are fair in combat, but they have many defensive and healing spells. The better priests are human.



RANGERS are very good in combat, and they know some priestly spells. Humans and dwarves make good rangers.

THIEVES are good with traps, locks, and hidden items; but they perform poorly in combat. Their fighting skills are helped by the fact that they can hit a monster no matter where it is, due to their stealth. Hobbits, gnomes, and some of the random creatures make excellent thieves.

WIZARDS are chiefly spellcasters. While poor in hand-to-hand combat, they know many offensive spells and are extremely important in encounters with monsters. Humans and elves do the job best.

INDIVIDUAL ATTRIBUTES

Five attributes are generated by the program after a new adventurer's race and class have been chosen. The value of each attribute ranges from 3 to 22, and the average depends upon the character's race and class. Each attribute determines a different capability:

STRENGTH (STR) refers to physical strength, and it is crucial for hand-to-hand combat. Fighters need a lot of strength to wield high-level combat equipment.

INTELLIGENCE (INT) is the mental prowess necessary for learning and casting spells. Wizards, priests, and monks must have a high intelligence.

DEXTERITY (DEX) means physical agility in handling weapons and conjuring spells, and especially in dodging attacks from monsters. Each profession needs good dexterity, especially fighters and spell casters.

CONSTITUTION (CON) refers to a character's endurance, and it affects the number of hit points a character can have (see Mortality and Hit Points in the ENCOUNTERS section).

CHARISMA (CHA) means having a charming personality and good looks. A character's charisma affects the price of training and spells (one further reason that many low-charisma random characters must pay more).

INTERACTION OF CHARACTERISTICS

A character's race and class affect the individual attributes. Each attribute can have a value ranging from 3 to 22. The charts in the next column show, to some degree, how these characteristics interact with each other.

Attribute Modifiers by Class

	STR	INT	DEX	CON	CHA
Fighter	12	8	11	10	9
Monk	10	10	11	10	10
Priest	10	12	10	10	10
Ranger	10	11	10	10	11
Thief	8	10	12	10	9
Wizard	6	13	8	10	11

Maximum Value for Attributes by Race

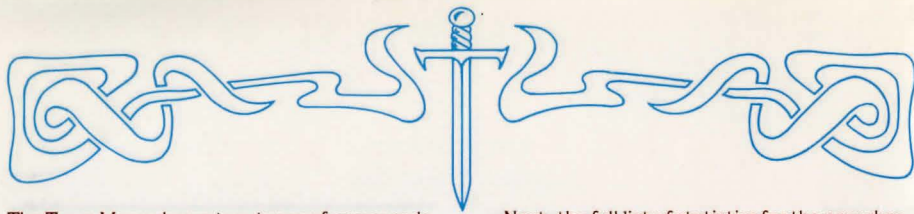
	STR	INT	DEX	CON	CHA
Human	18	18	18	18	18
Dwarf	20	17	17	19	17
Elf	17	19	19	17	18
Gnome	19	17	18	19	17
Halfling	16	18	20	18	17
Gnoll	20	13	17	21	11
Goblin	17	14	18	17	11
Kobold	17	15	19	19	13
Lizard	19	14	17	18	13
Minotaur	20	14	16	19	12
Ogre	21	14	16	19	13
Orc	19	16	17	18	14
Pixie	16	18	21	16	17
Sprite	16	18	22	16	17
Troll	22	13	15	20	12

TOWNS: Starting (and Ending)

After choosing "START IN PELNOR" on the initial menu, you will be in Pelnor, one of the 11 towns of Gelnor. It is in these towns that you will gather a band of noble, stout-hearted adventurers to take exploring; buy equipment, training, and spells; rest and refresh yourself; take care of money matters — all those concerns of daily life. Every town in Gelnor offers safety from monsters and provides the same amenities.

Each Gelnorian town operates in exactly the same manner, and they are identified by their name and number. Pelnor is Town #1.

Playing Hint: Game play always begins and ends in a town.



The Town Menu shows two types of commands: places to go and things to do.

TOWN MENU: GO TO

The top menu gives the commands that will take you to the various locations within the town walls: Armory, Guild, Mystic, Inn, Bank, and Road out of town.

The first place a new game player should visit is the Guild, where you can gather together a band of adventurers (see ADVENTURERS' CHARACTERISTICS section).

GUILD is where characters are generated and then formed into parties. As many as 37 characters can be generated, but a party can have no more than 6 adventurers.

GUILD MEMBERS commands are used to create new adventurers and add them to a party. Members may also be deleted from a party or renamed.

OPTIONS

- List all Guild members in Gelnor
- Purge a Guild member
- Create a new Guild member
- Rename a Guild member
- Add a Guild member to a party

NEW MEMBERS are created one at a time, and they should be carefully chosen. You must find the optimal mix of classes and races (see ADVENTURERS' CHARACTERISTICS section).

First, select the race of the new member, then choose the class.

Playing Hint: The following roster is recommended for a first-time party:

- 2 Spellcasters (wizards, monks) — humans or elves
- 1 Healer (priest, ranger) — human or dwarf
- 1 Thiefly type (thief, monk) — gnome, halfling, or random creature
- 2 Combatants (fighters, rangers) — humans, dwarves, or random creature

Once you have selected the race and class for a character, the program will assign number values to the individual attributes. If you find the attributes acceptable, you will type in the character's name.

Next, the full list of statistics for the new character will be shown. (See Inspect, under TOWN MENU: OTHER OPTIONS, for a full explanation). When you have finished studying the display, you may go back to the Guild Menu.

Playing Hint: Once generated, adventurers cannot get training in combat or spellcasting, nor can they leave the Guild for other parts of the town, until AFTER they have joined a party.

LIST MEMBERS shows all the Guild members of Gelnor, including each character's Guild number, name, class, and current residence (Gelnor is Town #1). The last three characters — FIRE, WATER, and EARTH — are the elementals that spellcasters may call into combat, using the SUMMON ELEMENTAL spell. Notice that they are fighters, that they also have Guild numbers, and that they live in Town #0 (not found in the Material Plane).

Playing Hint (for Apple and Macintosh users): Be sure to make a note of each character's (and elemental's) Guild number, since the program will require the number, not name, when he or she is added to a party and when a game is continued at a later date (see ENCORE: Continuing Saved Games).

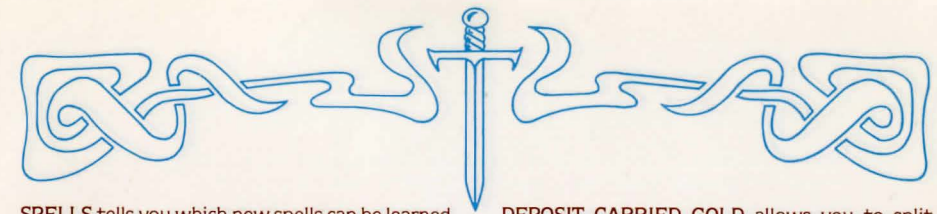
When you have finished with the list, return to the Guild Menu.

ADD MEMBERS to a party by giving the Guild number (not name — see LIST MEMBERS) of the character you want to add to the party. A party can have up to 6 adventurers. When characters join a party, a new party number is assigned to each one. As long as the character is in a party, the party number will be used to answer prompts by the program.

Playing Hint: If you plan to use the SUMMON ELEMENTAL spell during your next adventure, you should add the elementals to the party while you're still at the Guild.

RENAME MEMBERS lets you give a Guild member a new name. Characters cannot be renamed while they are members of a party.

PARTY MEMBERS options can only be used by characters that have been added to a party. Members may learn new spells, train for the next level, or be dropped off at the Guild.



SPELLS tells you which new spells can be learned by the character and how much they will cost. The spell will be identified by its number, not its name (see MAGIC section). If there are no numbers after POSSIBLE SPELLS:, then no new spells can be learned at this time.

TRAINING is the most effective way for a character to go up a level. When you enter the training arena, you will be told how many experience points are required and how much the training will cost.

Playing Hint: Characters must be carrying gold pieces (GP) to pay for learning new spells and for training. With new party members, this means going to the Bank (see BANK), making a withdrawal, then returning to the Guild.

DROP FROM PARTY allows you to eliminate a character from the party and send him or her back to the Guild.

EXIT GUILD takes you back to the Town Menu.

BANK has an account for each adventurer, and there are bank branches in every Gelnorian town. Money transactions can be made in any of these locations.

All the gold assigned to characters when they were generated was automatically deposited in their accounts. Before buying equipment and items at the Armory or buying spellcasting lessons and training at the Guild, gold needs to be withdrawn from the bank. Characters should take out enough to cover wilderness expenses, too — stays at inns, bribes, or purchases in the dungeon. Each of these costs about 250 GPs.

When entering a bank, the amount of gold pieces the party is carrying will be displayed (which will be 0, if a party has just been formed). The following options will be given:

- Withdraw money
- Deposit money
- Exit

WITHDRAW GOLD PIECES allows each party member to withdraw gold from his or her account. Once withdrawn, the gold is pooled and carried by the party. Only the party's total number of GPs will be shown after withdrawals. A party can carry up to 65,000 GPs.

DEPOSIT CARRIED GOLD allows you to split the party's gold among the individual members, then to deposit each share into the appropriate person's account. First you will be asked how many shares each party member gets (1, 2, or 3). Then the number of GPs deposited into each account is displayed. A bank account for a single character can hold a maximum of 65,000 GPs.

EXIT BANK takes you back to the Town Menu.

ARMORY stocks weapons, armor, shields, scrolls, magic potions, and healing potions — depending upon what is in inventory at any given time.

The Armorer buys his inventory from adventurers who enter town and sell the treasures they found during their journeys. The items are placed in the store and resold at a slightly higher price. Armories should be checked for changes in their stock.

Playing Hint: Rings, scrolls, and other treasures found in the Armory stay there for future visits. Combat weapons and potions, however, may appear and disappear between visits.

When you enter the Armory, you will be asked who is shopping. Select the appropriate character. Then list the inventory. You will see a display listing the commands and the items available for purchase.

The number in the first column is the item number, to be used when you BUY ITEM; the third column shows the price; and the fourth column shows the point value of combat equipment (see TREASURES section for an explanation of what the items can do).

The following actions may be taken in the Armory:

- List the items currently in stock
- Continue the listing or repeat the list again
- Let the current shopping character buy an item
- Allow another party member to shop
- Take the party back to the Town Menu

If you get the message, YOU CAN'T PURCHASE THAT, it means that you don't have enough money or that the item has sold out, even though it's still listed (did someone just buy it?).



Playing Hint: A character can only use one weapon, armor, and shield at a time, and they are never lost or stolen. If the character buys or finds new equipment, it should have a higher point value than the one already owned. Whatever the equipment is, make sure the character has enough strength (STR) to use it — even the club (point value is 4) may be too strong for a weaker character (see Combat Equipment in the TREASURES section). If the equipment is too strong for the current shopper, the item will be marked UNUSABLE.

MYSTIC gives an overall score for the party, so you can determine its progress in the adventure.

INN is where characters can have their hit points and magic restored to their maximum limit. Inns located in towns are free, and each stay lasts about two weeks. In addition, independent inns are located throughout the Isle of Gelnor, and they cost 250 GPs (plus tax) per stay.

Playing Hint: Characters who have cast spells during their adventures may find their maximum limit for magic has been raised after resting at an inn.

LEAVE TOWN puts you on the road outside town (see ADVENTURES section).

TOWN MENU: OTHER OPTIONS

Besides visiting the various merchants in a town, characters can perform certain activities shown on the lower portion of the Town Menu:

- Cast a spell
- Use an item that a character is carrying
- Distribute and sell items (after an adventure)
- Inspect the statistics of a party member
- Save game

PAPAST
LEVEL 1 PRIEST HUMAN OKAY

STRENGTH	14	AGE	24
INTELLIGENCE	16	HIT POINTS	4/5
DEXTERITY	12	MAGIC	7/7
CONSTITUTION	13	GOLD IN BANK	49
CHARISMA	14	EXPER. POINTS	0
LUCK	12	SCORE	2

SKILLS:		EQUIPMENT:	
ATTACK 48	SPOT TRAP 15	CLUB (4)	
PARRY 29	DISARM TRAP 8	ROBES (2)	
SWIM 27	FIND ITEM 12	SM SHIELD (4)	
LISTEN 12	PICK LOCK 6		

SPELLS: 1

INSPECT PARTY MEMBERS gives the statistics for a character in the party. You will be asked for the character you wish to inspect, and then you will see the display shown at the bottom of the previous column.

The display includes the character's name, level, class, race, and health status.

INDIVIDUAL ATTRIBUTES are listed in the first column, along with **LUCK** (a randomly assigned value from 8 to 13). These figures determine how certain tasks are performed (see ADVENTURERS' CHARACTERISTICS section for a full explanation).

AGE starts affecting characters' attributes as they reach their "declining years." Each race has a different lifespan: elves live about 3000 years; dwarves and gnomes about 200 years; humans, about 80 years; and the others, about 40 to 50 years.

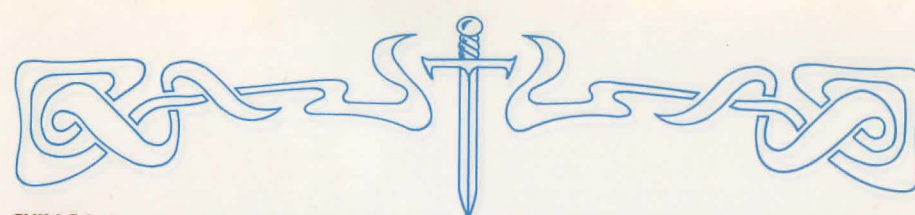
HIT POINTS indicate the amount of damage a character can sustain before dying. The number after the "/" shows the total number of hit points the character has; the number before the "/" shows the current status (it will go down whenever the character gets damaged and will go back up when rested or healed). When the character's hit points reach 0, he or she is dead (see Mortality and Hit Points in the ENCOUNTERS section).

MAGIC shows the number of points that can be used for spellcasting, and different spells use up differing amounts of magic points (see MAGIC section). The number after the "/" shows the total allowed the character; the number before the "/" shows the number left (it will go down each time the character casts a spell and go back up when rested or after taking a MAGIC potion).

GOLD IN BANK is the amount of gold the character has, which has been deposited in the bank. It does not include any of the character's gold that is currently being carried by the party. All characters start with 256 gold pieces (GP).

EXPER. POINTS refers to the amount of experience the character has. Experience points are earned by killing monsters, and they determine the character's level, which in turn determines maximum hit points, maximum magic, number of spells that can be learned, etc.

SCORE shows the character's general playing strength.



SKILLS include attack (striking foe in combat), parry (defending yourself in combat), swimming ability, listening for monsters, spotting traps in dungeons, disarming traps, finding treasure, and picking locks. The numbers show the percentage chance of being successful in these activities — **ATTACK 48** means a 48% chance of being successful in hitting (attacking) a monster.

EQUIPMENT lists the weapon (club), armor (robes), and shield. The numbers after the combat items show their point values — the higher the number the more effective the item. As other items are collected or bought at the armory, they will be listed here. Players can carry only 9 items at a time.

SPELLS gives the spell number of those spells the character has learned. Spell 1, for example, is Healing 1 (see MAGIC section).

When you have finished studying the character's statistics, hit the SPACE BAR to go back to the Town Menu.

CAST SPELL can only be done with those spells allowed in town, such as transportation and heal (see MAGIC section).

USE ITEM lets an adventurer use one of the items that he or she is carrying — read a scroll, take a magic or healing potion, and find the unusual properties of an item. After giving the character's number (not name), a list of his or her items will be shown. You then choose the one to be used.

Playing Hint: Scrolls can only be used (read) in a town.

DISTRIBUTE AND SELL ITEMS lets the members of the party gather up all their equipment — old items the party started out with and new items found or bought during their adventures — and distribute them to party members or sell them to the Armory.

The items carried by the party will be listed, along with the characters who can use each one. Items are listed from best to worst — first magical, then non-magical.

Playing Hint: Make sure all party members are present before you distribute and sell items. Do this before you save a game.

Remember that each party member can only carry up to 9 items at a time.

SAVE GAME is always accomplished in a town. Make sure you have the Guild number of the characters you are saving, because you will need to use them when you begin again (see ENCORE: Continuing Saved Games).

ADVENTURES

Your adventures are now beginning. You will travel across the fair Isle of Gelnor and perhaps explore a dungeon or two... maybe more. Good luck in your quest.

Messages will be displayed from time to time. The first one reads, **A TOWN. ENTER?** It requires a yes/no answer. For other messages that need a different response, hit the appropriate option. For example, this message might be displayed:

THIEF SPOTS A TRAP DISARM OR LEAVE

Choose **DISARM OR LEAVE**. (If you choose to disarm it, you will be asked who will do it. Respond with the appropriate character.)

If no response is required for a message, hit **RETURN** to erase it.

WILDERNESS TRAVEL

When your party leaves town and enters the wilderness, a map of the area you are in will be displayed (see specific instructions for your computer), along with pictures of the party members and a list of command options. The area near your starting point is known to you and visible. When you travel to unknown lands, the map is blank. When you pass through, it becomes visible. Options available are as follows:

- Cast a spell
- Display health of each party member
- Inspect the party and each member
- Allow a party member to use a potion
- Alter melee speed and toggle sound
- Move north one square
- Move east one square
- Move south one square
- Move west one square

CAST SPELL only works for non-combat/wilderness spells and everywhere spells (see MAGIC section).

HEALTH displays the hit points and magic points for each party member.



INSPECT displays the party's statistics, the statistics and items carried by each party member, and any newly acquired items.

USE POTION allows a character to use a magic or healing potion on himself or any other member of the party. When asked who is using the potion, select the appropriate character. Then a list of the character's potions will be displayed. Pick the potion, then select the character to receive it.

TIME LAG allows you to speed up or slow down melee action (except for Commodore and Atari users). Choose a number between 0 and 9 (0 is the fastest, 9 the slowest). You will also be asked if you want sound.

MAP of Gelnor is divided into 16 sections. If your party moves off the edge of the map, the next section will be displayed.

CROSSING WATER, either rivers or lakes, means the party members must swim or cross a bridge. Characters with poor swimming abilities may sustain damage (thereby reducing their hit points).

INNS are scattered over the Isle of Gelnor, in addition to being found in each town. These independent inns, though, cost 250 GP plus tax for a single stay of two weeks. Like the inns in town, they restore each character's magic and hit points to their maximum limits. Sometimes they increase spellcasters' maximum magic points.

DUNGEON EXPLORATION

When the party nears a dungeon, you will be asked if you want to enter. Answer Y or N. If you enter, you will be asked to turn your disk over, so the dungeon program can be loaded into the computer. (This is for Apple, Atari, and Commodore users only; ST and Macintosh users do not need to flip their disks.) Once loaded, the program will ask you if you want to leave. Answer Y or N.

When the party enters the dungeon, the wilderness map is replaced by the dungeon map, which is revealed as the party passes through each area.

The command line has a new option: Look at a larger area.

LOOK lets you "see" a larger area than you could otherwise. Some rooms, though, may be even larger than the area you can see with this command.

LISTEN skills are automatically employed by party members when they approach a door. If they hear monsters, a message is shown, and you have the option of turning back.

PICK LOCK, FIND ITEM, SPOT TRAP are also automatically attempted at the appropriate times. Success depends upon the party members' skill levels for these tasks.

DISARM TRAP is an option available when traps are spotted. If you want the trap disarmed, you will be asked who will do it. Select the appropriate character (usually a thief who has good disarm-trap skills).

LEAVING THE DUNGEON is done through the same door used when the party entered. On leaving, you will be asked if you want to save its current status.

Playing Hint: When you enter a dungeon for the second time, the monsters may be prepared for you — new locks installed and new monsters recruited. There is a limit, however, to what can be done with short notice; if you return soon after you left, the monsters you killed might still be dead.

ENCOUNTERS

Your party will inevitably encounter monsters, whether in the wilderness or a dungeon. While they may not be hostile, they will never be helpful. The risk is high — death to the unprepared and inexperienced.

MELEE

When the party and the monsters come face to face, a message will flash on the screen: AN ENCOUNTER. Next, you will see a display.

The top of the screen lists the party members, how many strikes each character can get into a single attack, each person's magic status, hit-point status, and general health.

The middle section lists the monsters and how many are in each rank or row. Rank 1 is the row closest to the party members, and most attacks will only be on these monsters.



The bottom section of the screen lists the options for the party as a whole:

- Fight the monsters
- Accept the monsters' surrender
- Greet the monsters
- Beg mercy from the monsters
- Run away

FIGHT starts combat between party members and the monsters.

ACCEPT SURRENDER (if the monsters do surrender) allows you to take the monsters' gold and items.

GREETINGS (if they are accepted by the monsters) allows the party to pass unharmed.

BEG FOR MERCY lets the party surrender its gold and some newfound items, then go free.

FLEE (if successful) allows the party to avoid combat. If unsuccessful, the monsters will continue to attack.

Combat takes place in melee rounds. In a single round, each party member will have individual options:

- Thrust with weapon
- Attack with weapon
- Slash with weapon
- Lunge with weapon
- Cast combat spell
- Parry with shield
- Redo options

ATTACK means taking two normal swings at a nearby monster (Rank 1).

THRUST means taking one hard, solid swing, which is more likely to hit and does 1 to 2 more points of damage than an attack.

SLASH means taking 3 or 4 quick swings, each of which is less likely to hit than an attack, and does 1 to 2 points less damage.

LUNGE allows fighters to take one swing at a monster in Rank 2.

CAST prompts you for the spell number you want.

PARRY is a defensive move, where the character uses a shield.

REDO lets you give a new command to a party member. You are given this option again, when all party members have been assigned a move.

Playing Hint: The best strategy is to thrust or lunge at monsters who are hard to hit and attack or slash at those who are easily hit.

Due to their stealth, thieves can thrust, attack, or slash monsters in any rank.

You will see each melee round enacted on the left section of the map screen, with each action recorded.

At the end of melee, you will make your choices for the party members' next melee round. The action continues until the monsters are all dead, have run away, or surrendered — or until the party has begged for mercy or fled.

EXPERIENCE POINTS AND GOLD are displayed at the end of combat — the number of experience points earned from the encounter and any gold retrieved from the monsters. These will be divided among individual party members when they enter a town.

TREASURE might be found, if the monsters had any and if a party member has good find-item skills for locating them in dungeons. (Monsters defeated in the wilderness and who surrender in the dungeons automatically give away their treasure.) You will be asked if you want to keep the treasure item (see TREASURES section). Items can be distributed and used when you enter a town. The party can carry up to 90 items they find while exploring.

NIGHT ENCOUNTERS periodically occur in the wilderness. At that time, whoever is on watch will hopefully hear the monsters and awaken the other party members. Otherwise, party members will wake up in the middle of combat. A priest or high-level ranger can speed up the process by casting an Awaken spell (see MAGIC section).

MORTALITY AND HIT POINTS

Each time a monster hits a character or other damage is sustained, the hit points will go down. When they reach 0, the character is dead (although he or she might be brought back to life by a high-level wizard using a RESURRECT spell).

Hit points can be restored by taking a HEALING POTION (see TREASURES section), a HEALING spell cast by a priest or ranger (see MAGIC section), and a rest in an inn. Depending upon the amount of damage the adventurer has taken, a combination of methods might be necessary to restore full health.

The maximum number of hit points allowed depends on the character's constitution, class, and experience level. The chart below shows averages for each profession by level.

MONSTERS

The Isle of Gelnor has its share of monsters — 80 different types, all willing and able to do battle with adventurers. Each type of monster has its own unique personality and set of attributes. These include how many are likely to appear at one time, attack and defense skills, amount of damage that can be inflicted on the victims, experience points and levels, magic power, hit points, size, "niceness," and amount of gold and treasure carried.

Some of these monsters will not have good attack skills but will defend very well, come in large packs, and be able to inflict much damage with the few attacks they accomplish. Others will have great attack skills but poor defense skills, yet the damage done to the victim by each hit will be low. High-level monsters, of course, will have good attack and defense skills, lots of magic to throw at adventurers, and enough hit points to fend off adventurers for many melee rounds.

First-time adventurers may take comfort; easily conquered monsters are around. Skeletons, giant ants, and giant bees, for example, have medium attack skills (45% to 50%), inflict damage on their victims of 1 to 7 points, and only have a few hit points. Attack these monsters with alacrity.

On the other hand, low-level adventurers might want to avoid the vipers. These 10-foot snakes are quite agile, making their attacks successful 80% of the time. Their thick skins give them 20 hit points, and their treacherous fangs can inflict from 1 to 14 points of damage.

Magic users appear harmless, since their scrawny bodies afford them a mere 7 hit points and their attack skills are only 50%. Beware, however. Their magic is strong; and if they get off one or two combat spells, your party could be depleted of several members.

As you explore more and more of Gelnor with stronger and stronger parties of adventurers, you will encounter monsters of increasing strength and power. Some have hit points in the hundreds, attack skills of 100% or more, and extremely high defense skills. Needless to state, one does not wrangle with Black Knights, gods, or other high-level beings carelessly. Be warned!

Hit Points by Class and Level for Adventurers with 10 Constitution

	LEVEL														
	1	2	3	4	5	6	7	8	9	10	11	12	13	14	15
FIGHTER	10	20	32	44	56	70	82	94	106	120	130	140	150	160	170
RANGER	8	18	28	40	50	60	72	84	96	110	120	130	140	150	160
PRIEST	8	12	20	30	40	50	60	70	80	90	98	106	114	122	130
MONK	8	10	18	22	32	44	54	62	70	80	88	96	104	112	120
THIEF	6	10	18	22	32	40	48	54	60	70	78	86	94	102	110
WIZARD	6	8	12	16	22	28	34	38	44	50	56	62	68	74	80

MAGIC

Magic is an integral part of the PHANTASIE experience, and it is especially useful in fighting monsters. The dexterous use of hand-to-hand combat and offensive combat spells may be the only way to defeat the foe.

When spells are conjured and cast, they use up the spellcaster's magic points. Spells can cost

from 1 to 4 magic points for each use, depending upon the spell. Magic points can be restored by drinking MAGIC potions and resting at inns.

SPELL DESCRIPTIONS

Spells fall into three general categories, each with several subcategories.

COMBAT SPELLS can only be used during encounters with monsters. They last only for the duration of combat. There are two types of combat spells:

- Passive magic always works and, whenever possible, counteracts any previously cast spells. For example, if an evil wizard throws a WEAKNESS 4 spell at the party, a STRENGTH 3 spell will cancel it. If an additional STRENGTH spell of any kind is cast, it will cancel the STRENGTH 3 spell.

- Active magic's effectiveness depends upon the spellcaster's magic power and experience level, as well as the strength of the target. Active spells may have a cumulative effect. A second FEAR spell, for example, can cause the victim to be even more afraid (but a second SLEEP spell will not deepen a trance).

NON-COMBAT SPELLS are used when no monsters are being encountered. There are three types:

- Town spells can only be cast in one of Gelnor's towns.

- Wilderness magic must be worked in the wilderness.

- Dungeon spells can be cast in dungeons.

EVERYWHERE SPELLS can be cast at any time and in any place — in combat or non-combat situations, and in town, in dungeons, or in the wilderness.

Spells available in PHANTASIE are listed in the next column.

AWAKEN (#51) rouses all sleeping party members or neutralizes a Sleep spell.

BINDING (#29-#32) inhibits the movement of opponents, so those affected are easier to hit. These spells are progressive, so Binding 3 is more powerful than Binding 2 and Binding 1 combined. They are particularly effective against flying creatures and monsters that are difficult to see.

CHARM (#41) makes monsters so friendly, they forget they are in combat.

CONFUSION (#21-#24) makes it difficult for monsters to use their magic. These spells are progressive, so Confusion 3 is more powerful than Confusion 1 and Confusion 2 combined. Confusion 4 is so effective that its victims will be completely unable to do any spellcasting.

Spell #	Magic Pts.	Name	Type*
1	1	HEALING 1	E
2	2	HEALING 2	E
3	3	HEALING 3	E
4	4	HEALING 4	E
5	1	FIREFLASH 1	C/A
6	2	FIREFLASH 2	C/A
7	3	FIREFLASH 3	C/A
8	4	FIREFLASH 4	C/A
9	1	QUICKNESS 1	C/P
10	2	QUICKNESS 2	C/P
11	3	QUICKNESS 3	C/P
12	4	QUICKNESS 4	C/P
13	1	STRENGTH 1	C/P
14	2	STRENGTH 2	C/P
15	3	STRENGTH 3	C/P
16	4	STRENGTH 4	C/P
17	1	PROTECTION 1	C/P
18	2	PROTECTION 2	C/P
19	3	PROTECTION 3	C/P
20	4	PROTECTION 4	C/P
21	1	CONFUSION 1	C/A
22	2	CONFUSION 2	C/A
23	3	CONFUSION 3	C/A
24	4	CONFUSION 4	C/A
25	1	WEAKNESS 1	C/A
26	2	WEAKNESS 2	C/A
27	3	WEAKNESS 3	C/A
28	4	WEAKNESS 4	C/A
29	1	BINDING 1	C/A
30	2	BINDING 2	C/A
31	3	BINDING 3	C/A
32	4	BINDING 4	C/A
33	1	MINDBLAST 1	C/A
34	2	MINDBLAST 2	C/A
35	3	MINDBLAST 3	C/A
36	4	MINDBLAST 4	C/A
37	1	FLAMEBOLT 1	C/A
38	2	FLAMEBOLT 2	C/A
39	3	FLAMEBOLT 3	C/A
40	4	FLAMEBOLT 4	C/A
41	1	CHARM	C/A
42	2	SLEEP	C/A
43	3	TELEPORTATION	C/A
44	4	RESURRECTION	E
45	1	NINJA 2	C/P
46	2	FEAR	C/A
47	3	DISSOLVE	C/A
48	4	SUMMONS ELEMENTAL	C/P
49	1	DISPELL UNDEAD	C/A
50	2	NINJA 1	C/P
51	3	AWAKEN	C/A
52	4	MONSTER EVALUATION	N/W/D
53	1	VISION	N/W
54	2	TRANSPORTATION	N/T

*Spell types include the following: E = Everywhere; C/P = Combat, passive (not cumulative); C/A = Combat, active (cumulative); N/W/D = Non-combat, wilderness or dungeon; N/W = Non-combat, wilderness only; N/T = Non-combat, town only.

DISPELL UNDEAD (#49) affects skeletons, zombies, ghosts, and other creatures who have returned from the grave. They may flee or simply dissolve.

DISSOLVE (#47) causes monsters to slowly dissolve away into nothing.

FEAR (#46) frightens the monsters into running away in terror.

FIREFLASH (#5-#8) shoots a powerful blast of flame at one monster close to the spellcaster, causing the following damage:

- Fireflash 1 — 1-10 points damage
- Fireflash 2 — 1-30 points damage
- Fireflash 3 — 1-60 points damage
- Fireflash 4 — 1-100 points damage

FLAMEBOLT (#37-#40) delivers one bolt of magical flame at each monster and does damage to its hit points (although some of the effect is absorbed by its armor):

- Flamebolt 1 — 1-7 points damage
- Flamebolt 2 — 1-15 points damage
- Flamebolt 3 — 1-31 points damage
- Flamebolt 4 — 1-66 points damage

HEALING (#1-#4) restores hit points to one party member:

- Healing 1 — 1-9 hit points
- Healing 2 — 1-27 hit points
- Healing 3 — 1-57 hit points
- Healing 4 — 1-99 hit points

MINDBLAST (#33-#36) transmits a powerful blast of psychic energy to the monsters and causes damage to their hit points:

- Mindblast 1 — 1-5 points damage
- Mindblast 2 — 1-11 points damage
- Mindblast 3 — 1-41 points damage
- Mindblast 4 — 1-81 points damage

MONSTER EVALUATION (#52) determines the approximate experience level of nearby monsters. Although it occasionally yields inaccurate results, it is a good spell to cast immediately upon entering a dungeon and at regular intervals in the wilderness.

NINJA (#45 & #50) transforms the spellcaster into a fighter of superhuman ability. Although Ninja 1 costs more magic points, it is not as powerful as Ninja 2.

PROTECTION (#17-#20) increases the effectiveness of each party member's armor by putting a magic aura around it:

- Protection 1 — +1 point
- Protection 2 — +3 points
- Protection 3 — +6 points
- Protection 4 — +10 points

QUICKNESS (#9-#12) makes all party members move faster, so they can swing more times during an attack:

- Quickness 1 — 10% increase
- Quickness 2 — 25% increase
- Quickness 3 — 45% increase
- Quickness 4 — 70% increase

RESURRECTION (#44) attempts to raise one party member from death. The shock of dying, however, will permanently lower the constitution of the victim by one or two points.

SLEEP (#42) causes the opponents to fall into a daze, and they cannot attack, parry, or cast spells.

STRENGTH (#13-#16) makes the party members stronger, increasing the amount of damage opponents take when they get hit:

- Strength 1 — 1-2 extra points of damage
- Strength 2 — 1-4 extra points of damage
- Strength 3 — 1-7 extra points of damage
- Strength 4 — 1-11 extra points of damage

SUMMON ELEMENTAL (#48) calls up Earth, Fire, or Water (one spell summons one elemental) to fight for the party. The elemental will only serve a party of six adventurers. What's more, elementals must be added to your party while you are at the adventurer's Guild in one of the towns.

TELEPORTATION (#43) teleports the party safely away from the combat.

TRANSPORTATION (#54) inter-dimensionally transports the party from one town to another.

VISION (#53) gives the spellcaster the ability to see in all directions for hundreds of miles. It is particularly useful for mapping vast unknown areas.

WEAKNESS (#25-#28) causes monsters to lose strength, so they do less damage when they hit party members. The strength of the spell depends on how powerful the monsters are and which spell was used (1, 2, 3, or 4).

DIVINE SPELLS (#58+) may only be acquired in the course of the game for special purposes.

SPELLS BY CLASS AND LEVEL

Each class of adventurer can learn spells, though for some classes, a high level of experience is required. The following chart shows which spells (designated by their number) are available to be learned at which level, arranged by class. Although spells may be available for learning, how many spells a character can actually learn depends upon his or her intelligence, as well as class and level.

Spells Available at Different Levels by Class

	LEVEL														
	1	2	3	4	5	6	7	8	9	10	11	12	13	14	15
WIZARD	5	13	6	7	21	25	8	34	11	35	15	36	12	16	47
	9	41	10	14	54	33	37	45	38	-	39	48	-	40	-
	-	-	-	-	-	50	46	51	-	-	-	-	-	-	-
PRIEST	1	21	2	25	3	18	23	4	7	8	31	24	32	20	48
	51	29	17	42	22	30	26	43	19	37	34	27	39	28	-
	53	-	49	-	-	-	-	-	44	-	-	-	-	-	-
RANGER	1	17	25	2	29	3	18	4	6	30	26	22	33	37	23
	5	-	49	-	52	-	51	-	21	-	42	-	44	-	-
MONK	5	50	6	45	53	7	13	8	33	9	34	14	35	10	36
	-	-	54	-	-	-	48	-	-	-	-	-	-	-	-
FIGHTER	-	-	52	-	-	9	-	-	13	-	-	11	-	-	15
THIEF	-	-	-	41	-	-	42	-	-	18	-	-	8	-	-

Maximum Magic Points at Different Levels by Class

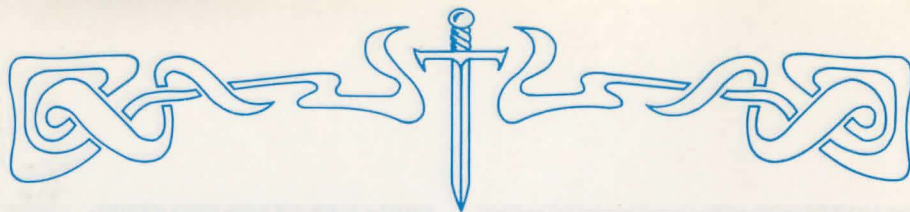
	LEVEL														
	1	2	3	4	5	6	7	8	9	10	11	12	13	14	15
WIZARD	10	11	11	12	13	14	14	15	16	16	17	17	18	19	20
PRIEST	10	11	12	13	14	15	16	17	18	19	20	20	20	20	20
RANGER	8	9	10	11	12	13	14	15	16	17	18	18	18	18	19
MONK	10	10	10	11	11	11	12	12	12	13	13	14	16	18	20
FIGHTER	7	7	8	8	9	9	10	10	11	12	13	14	15	16	18
THIEF	6	6	7	7	8	8	9	10	11	12	13	13	14	14	15

TREASURES

Treasures are held by monsters and retrieved by adventurers. Some items can be found in the Armory, since adventurers are allowed to DISTRIBUTE AND SELL their captured treasures whenever they enter a town. Needless to state,

Armories in different towns may carry different inventories (see TOWN section).

Treasures fall into four general categories, classified by their use.



Shields

Item #	Point Value	Strength Req'd	Type
1	1	1	Glove
2	2	2	Wooden shield
3	3	3	Wooden shield +1
4	4	4	Small shield
5	5	5	Small shield +1
6	6	6	Small shield +2
7	7	7	Small shield +3
8	8	8	Medium shield
9	9	9	Medium shield +1
10	10	10	Medium shield +2
11	11	11	Medium shield +3
12	12	12	Large shield
13	13	13	Large shield +1
14	14	14	Large shield +2
15	15	15	Large shield +3
16	16	16	Giant shield
17	17	17	Giant shield +1
18	18	18	Giant shield +2
19	19	19	Giant shield +3
20	20	20	God shield (magic)

Armor

Item #	Point Value	Strength Req'd	Type
21	1	2	Clothing
22	2	4	Robes
23	3	6	Leather
24	4	8	Hard leather
25	5	10	Ring mail
26	6	12	Scale mail
27	7	14	Chain mail
28	8	16	Splint mail
29	9	18	Banded mail
30	10	20	Plate mail
31	2	0	Cloth +1
32	3	0	Robes +1
33	4	2	Leather +1
34	5	4	Leather +2
35	6	6	Ring mail +1
36	7	8	Ring mail +2
37	8	10	Chain mail +1
38	9	12	Chain mail +2
39	10	14	God robes (magic)
40	11	16	God armor (magic)

COMBAT EQUIPMENT

Combat equipment includes shields, armor, and weapons. Each of these items requires the owner to have a minimum strength level for that item: Higher level equipment can only be used by higher strength characters. The charts above and on the facing page list the items, their point values, and the strength requirements of the adventurer using them.

POTIONS

Potions are liquid substances, carried in vials, and taken by mouth (that is, you drink them). There are two types in PHANTASIE:

HEALING POTIONS (#101-#110) restore a character's hit points. They come in ten different strengths; the higher the number, the more points are restored:

Healing 1 — 1 pt. Healing 6 — 35 pts.
 Healing 2 — 4 pts. Healing 7 — 49 pts.
 Healing 3 — 9 pts. Healing 8 — 64 pts.
 Healing 4 — 16 pts. Healing 9 — 81 pts.
 Healing 5 — 25 pts. Healing 10 — 100 pts.

MAGIC POTIONS (#111-#120) restore a character's magic points. They also come in ten different strengths, and work like Healing Potions:

Magic 1 — 3 pts. Magic 6 — 18 pts.
 Magic 2 — 6 pts. Magic 7 — 21 pts.
 Magic 3 — 9 pts. Magic 8 — 24 pts.
 Magic 4 — 12 pts. Magic 9 — 27 pts.
 Magic 5 — 15 pts. Magic 10 — 30 pts.

SCROLLS

A secret society has recorded important events concerning the Isle of Gelnor and its demise. The 20 scrolls have been scattered throughout the land — some hidden, some left in the care of trusted citizens (many of whom, unfortunately, have met with foul play). To the wise and knowledgeable, their contents hold the keys to restoring Gelnor to its former glory.

Playing Hint: Scrolls can only be read (used) in town (see Use Items in TOWN section).

MORE TREASURES

OBJETS D'ART AND OTHER VALUABLES of vast wealth are said to be hoarded by Black Knights and monsters alike — gems, precious minerals, and glorious works of art — in addition to gold. One hears of magnificent sapphires, a golden ring of incredible workmanship, a large gold statue fashioned after an ox and encrusted with jewels . . .

RINGS AND WAND, according to rumors, are described in several scrolls, and they are significant to the plight of Gelnor.

Weapons

Item #	Point Value	Attributes Req'd*	Type
41	0	2	Stick
42	1	4	Knife
43	1	6	Small club
44	2	8	Small staff
45	2	10	Small mace
46	3	12	Dagger
47	3	14	Small flail
48	4	16	Club
49	4	18	Mace
50	5	20	Small hammer
51	5	22	Small axe
52	6	24	Staff
53	6	26	Short sword
54	7	28	Flail
55	7	30	Hammer
56	8	32	Pitch fork
57	8	34	Spear
58	9	36	Axe
59	9	38	Sword
60	10	40	Heavy mace
61	10	42	Maul
62	11	44	Trident
63	11	46	Large spear
64	12	48	Large axe
65	12	50	Morning Star
66	13	52	Pike
67	13	54	Long sword
68	14	56	Spetum
69	14	58	Bardiche
70	15	60	Halbred
71	3	2	Small mace +1
72	4	4	Dagger +1
73	4	6	Small mace +2
74	5	8	Dagger +2
75	6	10	Dagger +3
76	7	12	Staff +1
77	7	14	Dagger +4
78	8	16	Flail +1
79	9	18	Spear +1
80	10	20	Axe +1
81	10	22	Sword +1
82	11	24	Sword +2
83	12	26	Sword +3
84	13	28	Large Axe +1
85	13	30	Sword +4
86	14	32	Sword +5
87	15	34	Sword +6
88	16	36	Halbred +1
89	16	38	Sword +7
90	17	40	Halbred +2
91	18	42	Halbred +3
92	19	44	Sword +10
93	19	46	Halbred +4
94	20	48	Halbred +5
95	21	50	Halbred +6
96	22	52	Halbred +7
97	22	54	God knife (magic)
98	23	56	God mace (magic)
99	24	58	God axe (magic)
100	25	60	God sword (magic)

*Attributes Req'd refers to the values for STR and DEX needed to use the weapon. The number is derived from: STR x 2 + DEX.



PHANTASIE I and PHANTASIE II COMPUTER-SPECIFIC RULES

APPLE® II SERIES

This section lists specific instructions for the Apple II, II+, IIe, and IIc computers. General rules for playing PHANTASIE and PHANTASIE II may be found in the preceding pages.

LOADING THE GAME

Place the game disk, with the label facing up, into your disk drive. Turn on your computer and the disk will boot. You should see the title page.

The game program is on the front side of the disk; the dungeons programs are on the back side. When you enter a dungeon, you will be prompted to turn your disk over.

INITIAL MENU COMMANDS

KEY	RESULT
1	Start a new game in the town of Pelnor
2	Continue a previously saved game
3	Demo (in PHANTASIE II only)

TOWN MENU

GO TO

The top menu gives the commands that will take you to the various locations within the town walls:

KEY	PLACE	KEY	PLACE
A	Armory	N	Inn
G	Guild	B	Bank
M	Mystic	L	Road out of town

After choosing a GO TO option, you will see a new list of commands for each option:

GUILD

KEY	RESULT
L	List all Guild members in Gelnor
P	Purge a Guild member
N	Create a new Guild member
R	Rename a Guild member
A	Add a Guild member to a party

List members will present the display shown at the top of the next column.

-- GUILD MEMBERS --									
#	NAME	CLASS	TOWN	#	NAME	CLASS	TOWN		
1	LEFTY	TH		1					
2	SWAT	FI		1					
3	HOBY	TH		1					
4	FRANCIS	MO		1					
5	ZANDOR	WI		1					
6	DELD	WI		1					
7	FOLNAR	PR		1					
8	CHIP	MO		1					
9	GRUNFELD	FI		1					
10	ABBOTT	MO		1					
11	SANARA	PR		1					
12	ALI	TH		1					
13	ARENTINO	RA		1					
14	MINOS	FI		1					
						38	FIRE	FI	0
						39	WATER	FI	0
						40	EARTH	FI	0

BANK

KEY	RESULT
W	Withdraw money
D	Deposit money
E	Exit

ARMORY

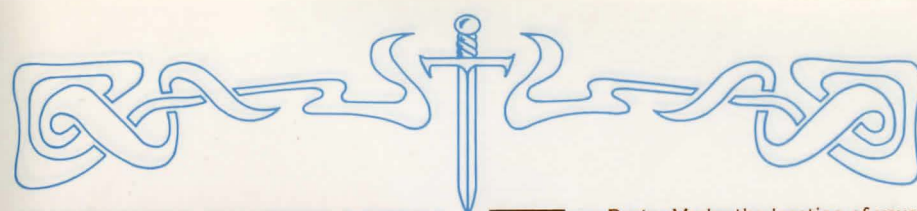
KEY	RESULT
L	List the items currently in stock
C	Continue the listing or repeat the list again
B	Let the current shopping character buy an item
A	Allow another party member to shop
E	Take the party back to the Town Menu

TOWN MENU: OTHER OPTIONS

While in town, characters may participate in certain activities shown on the lower portion of the Town Menu:

KEY	RESULT
C	Cast a spell
U	Use an item that a character is carrying
D	Distribute and sell items (after an adventure)
I	Inspect the statistics of a party member
S	Save game

If you choose to inspect the party members, you will see the display shown at the top of the next page.



PAPAST			
LEVEL	1	PRIEST	HUMAN OKAY
STRENGTH	14	AGE	24
INTELLIGENCE	16	HIT POINTS	4/5
DEXTERITY	12	MAGIC	7/7
CONSTITUTION	13	GOLD IN BANK	49
CHARISMA	14	EXPER. POINTS	0
LUCK	12	SCORE	2
SKILLS:		EQUIPMENT:	
ATTACK	48	SPOT TRAP	15
PARRY	29	DISARM TRAP	8
SWIM	27	FIND ITEM	12
LISTEN	12	PICK LOCK	6
		CLUB	(4)
		ROBES	(2)
		SM SHIELD	(4)
SPELLS: 1			

ADVENTURE COMMANDS

KEY	RESULT
C	Cast a spell
H	Display the health of each party member
I	Inspect the party and each member
U	Allow a party member to use a potion
T	Alter melee speed and toggle sound
L	Look at a larger area (dungeon only)
3	Move north one square*
N	Move north one square*
E	Move east one square
S	Move south one square
W	Move west one square

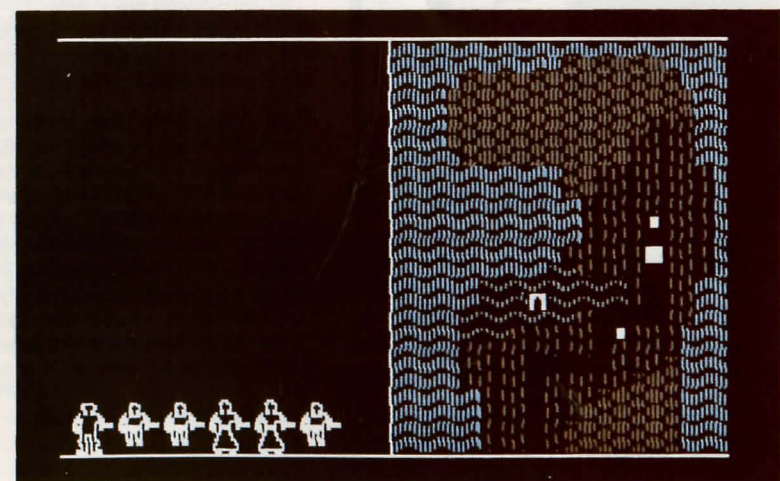
* Movement has been made more convenient with the 3 command for north; you use the 3-E-S-W diamond configuration.

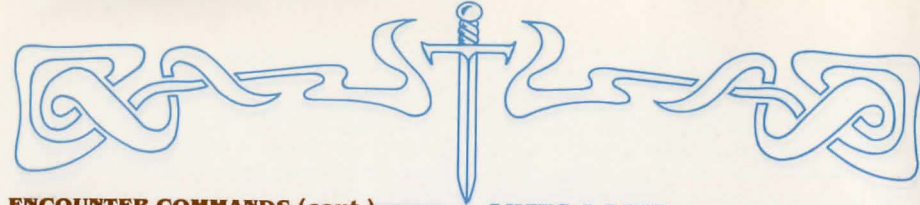
ENCOUNTER COMMANDS

When your party leaves town and enters the wilderness, a display of your party members and a map of the surrounding terrain will appear. Refer to the key in the next column for an explanation of the various terrain symbols.

-  = Party. Marks the location of your band of adventurous travelers.
-  = Town/Inn. A place to refresh yourself and to buy equipment, training, and spells.
-  = Dungeon. Search the rooms and corridors for valuable items. Watch for traps and monsters!
-  = Path. Travelling here is easy (passing through takes less time relative to the other types of terrain). You will have a variety of encounters.
-  = Desert. Easy travelling. You will encounter mostly humanoids and magic users.
-  = Grassland/Forest. Travelling is more difficult. You will meet insects and slimes here.
-  = Mountains/Hills. Travelling is extremely difficult. Wild animals abound.
-  = River/Lake. You must swim or cross a bridge in order to traverse this terrain. You will encounter no one, and no monsters will attack you.

NOTE: Nighttime brings more insects and undead encounters. Beware!





ENCOUNTER COMMANDS (cont.)

Party options:

KEY RESULT

- 1 Fight the monsters
- 2 Accept the monsters' surrender
- 3 Greet the monsters
- 4 Beg mercy from the monsters
- 5 Run away

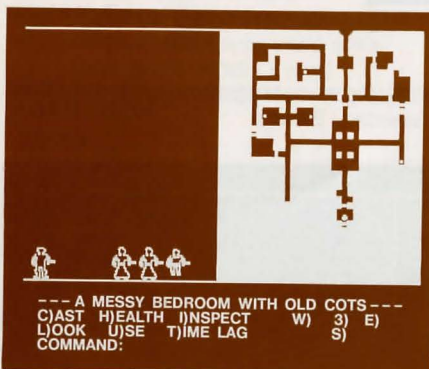
Individual melee options:

KEY RESULT

- 1 Thrust with weapon
- 2 Attack with weapon
- 3 Slash with weapon
- 4 Lunge with weapon
- 5 Cast combat spell
- 6 Parry with shield
- 7 Redo options

DUNGEON EXPLORATION

When the party nears a dungeon, you will be asked if you want to enter. Answer Y or N. If you enter, you will be asked to turn your disk over so the dungeon program can be loaded into the computer. Once loaded, the program will ask you if you want to leave. Answer Y or N. The dungeon map is revealed as you explore various areas.



- | | | | |
|--|----------|--|------------|
| | = party | | = room |
| | = item | | = corridor |
| | = column | | = door |

The command line has a new option:

Key Result

- L Look at a larger area

SAVING A GAME

To save a game, you must be in a town. Type S for save. Make sure you have the Guild number of the characters you are saving; you will need to use them when you begin again. When you leave a town, your characters are automatically saved onto the game disk.

If you have previously saved a game and if you choose 2 - CONTINUE SAVED GAME on the initial menu, you will be asked which party member you want.

Since PHANTASIE allows several parties to be exploring concurrently, different characters may be located in different towns. To determine which character or party you now want to continue playing, the program needs to know which character you want (which also calls up the party he or she is a member of).

Give the Guild number of the character you want to call up. You will be taken straight to the town where that character was residing at the close of the last game. Proceed from there (see TOWNS section).

UTILITY COMMANDS

BACKING UP CHARACTERS

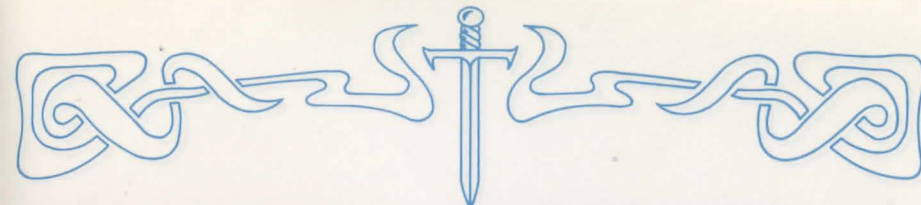
To back up characters onto a separate disk, boot the back side of the game disk, labeled DUNGEON DISK. You will now be prompted to turn the disk over and to hit any key. When you do that, the following commands can be used:

KEY RESULT

- 1 Continues the game where you left off
- 2 Initializes a blank disk
- 3 Transfers characters to backup disk
- 4 Transfers characters from backup disk
- 5 Starts a new game from scratch

First, use 2 to initialize (format) a blank disk. Next, either use 3 to copy a character from the game disk to your backup disk, or use 4 to copy a character from a backup disk to your game disk.

If you choose 5 to start a new game, you will see this prompt: STARTING NEW GAME WILL ERASE OLD CHARACTERS OKAY? (Y/N). If you say Y, your old characters will be erased and the dungeons reset — just as if you had bought a new game. N will leave you at the same menu and the computer will be waiting for another choice.



TRANSFERRING PHANTASIE I CHARACTERS TO PHANTASIE II

Those of you who have played PHANTASIE I and still have your characters saved may use them in PHANTASIE II by booting the dungeon side of the PHANTASIE II disk and selecting Option 6) Transfer characters from PHANTASIE I to PHANTASIE II. **Warning:** This process will have the following adverse effects:

Your characters must pay all items except the wand of Nikademus. They must also pay the majority of their money and will lose most of the experience they have accumulated and all spells except for any divine spells (#55 and above). Wizards will keep spell #5 and Priests spell #1. If you decide to use your old characters in PHANTASIE II, then "transfer characters" should be the first thing you do. At this point, you may wish to train the characters at the Guild as they will be at level 0 but have enough experience to improve. Any characters you have created beforehand on the PHANTASIE II disk will be erased by the transfer process.

BACKUP DISKS

The PHANTASIE II disk is not copy protected. You should back it up for your own purposes before you begin play. Any of the good commercial copiers should do it.

COMMODORE™ 64/128

This section lists specific instructions for the Commodore 64 and Commodore 128 (in C-64 mode) computers. General rules for playing PHANTASIE and PHANTASIE II may be found in the preceding pages.

The game can be played by using either a joystick or the keyboard. If you are using a joystick, plug it into port number two.

To select an option appearing on any of the game's menus, you simply first highlight that option by using either the joystick if the joystick is used, or the standard cursor keys if the keyboard is used. Once the option is highlighted, it may be selected by pressing the fire button, the SPACE BAR, or the RETURN key.

LOADING THE GAME

To load the game, place the disk in the drive with the label up. Turn on the computer, type LOAD "*" ,8,1 and the game will automatically boot.

INITIAL MENU COMMANDS

Select one of two options:

- 1 Start in Pelnor
- 2 Continue saved game

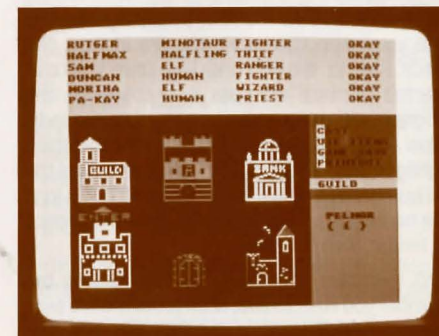
TOWN MENU

GO TO

The town menu gives the command that will take you to the various locations within the town walls:

OPTION	RESULT
GUILD	Creating and training characters
ARMORY	Buying equipment
BANK	Depositing and withdrawing gold
INN	Resting and distributing
MYSTIC	Getting scores
EXIT	Leaving town

The following screen will appear:



To select an option:

Joystick. Use the joystick to move the arrow to a town location, then press the fire button.

Keyboard. Press the cursor keys to move the arrow to a town location, then press the SPACE BAR or the RETURN key.

GUILD

Guild(4) is where characters are generated and then formed into parties. A maximum of 21 characters can be generated. All Guild members are displayed on the screen when ADD, RENAME, and PURGE Guild member commands are used.

GUILD MEMBER commands are used to create new adventurers and add them to a party:

OPTION	RESULT
ADD	Add a Guild member to a party
NEW	Create a new Guild member
RENAME	Rename a Guild member
PURGE	Purge a Guild member



NEW option creates a new member one at a time. Select the race of the new member by highlighting the race you want, then pressing the fire button, the SPACE BAR, or the RETURN key. Next, choose the class of the new member by highlighting the class you want, then press the fire button, the SPACE BAR, or the RETURN key. Once you have selected the race and class for a character, the program will assign number values to the individual attributes. If you wish to keep the character, highlight YES; if not, highlight NO, and press the fire button, the SPACE BAR, or the RETURN key. The name you assign to a Guild member cannot be longer than 9 letters.

ADD members to a party by highlighting the member you wish to add, then press the fire button, the SPACE BAR, or the RETURN key. The member will be added to the party which is displayed on the top of the screen. Once you have all the members you want (maximum of six), highlight NO to leave this option. Each Guild member or party member is not assigned a number, as in the Apple version.

INSPECT option appears in the Guild, not under the Town Menu: Other Options. The INSPECT option may be used to inspect not only your party members, but also all the Guild members as well.

PARTY MEMBER commands can only be used by characters that have been added to a party:

OPTION	RESULT
SPELLS	Learn new spells
TRAINING	Train for the next level
DROP	Drop a party member off at the Guild

SPELLS option takes you to the numerical menu. To change the spell number, move the joystick to increment the number up or down in units of one or ten. Press the button when the spell you wish to learn is shown. You may also input the number from the keyboard and type RETURN.

EXIT is not assigned to the E key. Select EXIT by highlighting it, then press the fire button, the SPACE BAR, or the RETURN key.

BANK

BANK(5) function is the same as the Apple version. The following options will be given:

OPTION	RESULT
WITHDRAW	Withdraw gold pieces
DEPOSIT	Deposit carried gold pieces
EXIT	Take the party back to the Town Menu

Remember to first highlight the option you wish to select, then press the fire button, the SPACE BAR, or the RETURN key. Once you have selected DEPOSIT or WITHDRAW, a numerical menu is shown. Move the joystick until the desired amount shows, then press the button. (Hint: Move the joystick once to -1 to show maximum amount.) You may also type the amount on the keyboard and press RETURN.

ARMORY

When you enter the Armory, you will be asked who is shopping. Highlight the party member you wish to do the shopping, then press the fire button, the SPACE BAR, or the RETURN key. You will see a list of items on the lower half of the screen, along with three ARMORY commands:

OPTION	RESULT
BUY	Let the current highlighted character buy the highlighted item
ANOTHER SHOPPER	Allow another party member to shop
EXIT	Take the party back to the Town Menu
ARMORY	Menu



The LIST and CONTINUE the listing options are eliminated since all items in stock are listed on the screen once you designate your shopper.

INN

INN (6) is the only place where you may distribute and sell items.

OPTION	RESULT
DISTRIBUTE	Distribute and sell items
EXIT	Take the party back to the Town Menu

MYSTIC

MYSTIC (6) gives an overall score for the party, so you can determine its strength. When you have finished, hit the fire button, the SPACE BAR, or the RETURN key to return to the TOWN MENU.

TOWN MENU: OTHER OPTIONS

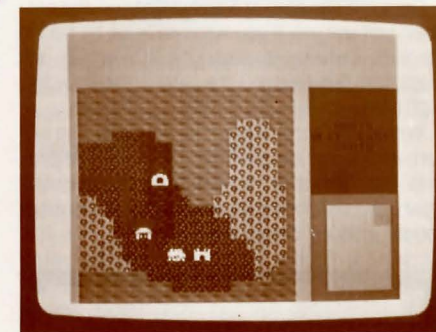
Besides visiting the various merchants in a town, characters can perform certain activities shown on the middle right side of the screen:

KEY	RESULT
C	Cast a town spell
U	Use an item that a character is carrying
G	Save a game
P	Print out certain attributes of each party member

ADVENTURE COMMANDS

WILDERNESS TRAVEL

When your party leaves town and enters the wilderness, a map of the area you are in will be displayed on the left side of the screen, along with a small legend indicating which section of Gelnor your party is currently traveling in and a list of command options. Pictures of your party members will not be displayed until an Encounter.



Commands available are as follows:

OPTION	RESULT
INSPECT	Inspect the party and each member
USE	Allow a party member to use a potion
POTION	Display the health of each party member
HEALTH	Display the health of each party member

CAST SPELL	Cast a spell
MOVE (moving one square)	
north	Move north one square*
west	Move west one square*
east	Move east one square*
south	Move south one square*

Remember to highlight the option you wish to select, then press the fire button, the SPACE BAR,

* To select the direction you wish to move: Joystick. Move joystick in direction you wish to move. Hold the joystick in a given direction to move your party continuously, one square at a time. Press fire button to return to Adventure Menu.

Keyboard. Press cursor (arrow) keys or 3,N,W,E,S keys. Press SPACE BAR or RETURN key to return to Adventure Menu.

CAST SPELL will take you to the Numerical Menu. Select your spell using the joystick and press the button to enter your selection.

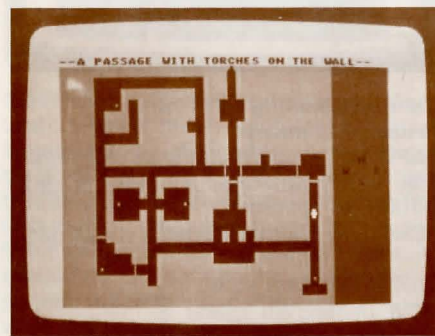
DUNGEON EXPLORATION

When your party nears a dungeon, you will be asked if you want to enter. Highlight YES or NO, and press the fire button, the SPACE BAR, or the RETURN key.



Once the dungeon program is loaded, the program will ask you if you want to leave by taking the exit. Once again, highlight YES or NO, and press the fire button, the SPACE BAR, or the RETURN key.

When your party enters the dungeon, the wilderness map is replaced by a scrolling dungeon map (see attached picture map of dungeon). Again, pictures of your party members will not appear until an Encounter.



ENCOUNTER COMMANDS

When the party and the monsters come face to face, a message will flash on the screen: AN ENCOUNTER. After a picture of your party members and the monsters is shown, you will see a display.

The top of the screen lists the party members, how many strikes each character can get into a single attack, hit point status, and each person's magic status. The health status of each member is color coded according to the legend in the middle of the screen.

The monsters are listed according to rank, quantity, and type on the bottom of the screen.

The middle right section of the screen lists the options for the party as a whole:

OPTION	RESULT
BEG MERCY	Beg mercy from the monsters
THREATEN	Threaten the monsters and accept their surrender
GREETINGS	Greet the monsters
FIGHT	Fight the monsters
FLEE	Run away

Options for individual party members appear as follows:

OPTION	RESULT
THRUST	Thrust with weapon
ATTACK	Attack with weapon
SLASH	Slash with weapon
LUNGE	Lunge with weapon
SPELL	Cast combat spell
PARRY	Parry with shield

Highlight the option you wish to select, then press the fire button, SPACE BAR, or RETURN key. The individual combat option chosen in one turn of combat remains unchanged until you modify it.

SAVING THE GAME

To save a game, you must be in a town. Choose G for Game Save and press the RETURN key.

UTILITY COMMANDS

BACKING UP CHARACTERS

Load the back side of the disk. You will see the following menu:

- 1 Play game
- 2 Transfer characters to backup disk
- 3 Transfer characters from backup disk
- 4 Start a new game from scratch
- 5 Initialize disk

To back up a character (your disk must be initialized first), press 2 and the RETURN key. You will be asked to insert your boot disk. After some time, you will then be asked to insert your backup disk. After completing the backup process, the program will return to the original menu listed above.

TRANSFERRING PHANTASIE I CHARACTERS TO PHANTASIE II

Those of you who have played PHANTASIE I and still have your characters saved may use them in PHANTASIE II by booting the dungeon side of the PHANTASIE II disk and selecting Option 6) Transfer characters from PHANTASIE I to PHANTASIE II. **Warning: This process will have the following adverse effects:**

Your characters must pay all items except the wand of Nikademus. They must also pay the majority of their money and will lose most of the experience they have accumulated and all the spells except for any divine spells (#55 and above).



ATARI® 520 ST

This section lists specific instructions for the 512K Atari ST. General rules for playing PHANTASIE and PHANTASIE II may be found in the preceding pages.

LOADING THE GAME

Insert the disk labeled "Phantasie Game Disk." Select the START icon with the mouse, then select "Open" under the FILE menu. You will then be asked to insert your game disk. Insert the disk labeled "Phantasie Data Disk." Place the arrow in the "Good Luck" box and click.

INITIAL MENU COMMANDS

Select one of the two following options by highlighting the option with the arrow and clicking the mouse:

- Start this turn in Pelnor
- Continue saved game

TOWN MENU

A town screen has a series of buildings and two pull-down menus. The first menu is called INFO. The second menu contains the Town Menu options or various building options (Guild, Bank, Inn). For example, when you first enter Town, the menu at the top of the screen will read "Town menu." If you enter the Guild, it will read "Guild Menu."



GUILD

Place the arrow on the door of the Guild building. Click the mouse button. The bottom of the screen should read "Guild." The menu at the top of the screen should read "Guild Menu." Options under the Guild menu may be selected by highlighting

Wizards will keep spell #5 and Priests spell #1. If you decide to use your old characters in PHANTASIE II, then "transfer characters" should be the first thing you do. At this point, you may wish to train the characters at the Guild as they will be at level 0 but have enough experience to improve. Any characters you have created beforehand on the PHANTASIE II disk will be erased by the transfer process.

BACKUP DISKS

Both PHANTASIE I and PHANTASIE II are not copy protected. Before you begin play, you should back them up for your own personal use. Any good commercial copier should do it.

ATARI® 800 SERIES

This section lists specific instructions for the Atari 400, 800, 1200, and XL computers. General rules for playing PHANTASIE and PHANTASIE II may be found in the preceding pages.

To select an option appearing on any of the game's menus, you may use either the joystick or the keyboard. If you're using the joystick, you may select an option by highlighting the option and pressing the fire button. If you're using the keyboard, use the standard cursor (arrow) keys to highlight an option. Press the RETURN key or SPACE BAR to select that option.

NOTE: You do not need to use the CNTRL key with the cursor (arrow) keys. Use the cursor keys only.

LOADING THE GAME

Remove all cartridges from your computer. Boot up the front side of the disk (800XL owners must hold down the OPTION key when they turn on their computer to boot).

For other Atari instructions for playing PHANTASIE and PHANTASIE II, please see the Commodore rules.



the option and clicking the mouse button. In general, each option you select under the Guild menu will give you another set of selections. To make a selection, simply point the mouse at the party member or option and click the mouse button. Guild menu options are as follows:

- Spells
- Training
- Add member
- New member
- Drop member
- Rename
- Inspect
- Purge
- Exit Guild

NOTE: When you are creating new members, you may discard or keep the character by clicking the PURGE or KEEP box. If you keep the character, you will be asked to name it. You must type the character's name in all capital letters.

Once you are finished in the Guild, click on the Exit option.

BANK

Click on the doors of the bank. The bank menu will give you three options:

- Withdraw
- Deposit
- Exit bank

After choosing "Withdraw," you will see a display of the party members and the question "Who will withdraw?" Select the appropriate party member with the arrow key and click the mouse button. The computer will display the maximum amount you may withdraw. Type in the amount and click OK. After you have finished withdrawing money, click CANCEL. If you choose deposit, the screen will list each party member and ask how many shares the member should receive. Click on the box with the appropriate number of shares.

ARMORY

You may enter the Armory by placing the arrow on the Armory building doors and clicking the mouse key. A listing of your party members will appear. To select a character, point the mouse at the member and click the mouse key. If you select "Buy" an item, you may scroll the list by clicking the arrow found on the right side of the screen. Another party member may shop if you select "Another Shopper."

MYSTIC

To receive the mystic's message, place the arrow on the doors of the building marked M and click the mouse button.

INN

You may select one of two options:

- Distribute
- Exit

The distribute option displays a screen with the party members on top and the available items on the bottom. As you click a party member, the Armory item listed will be distributed. If you wish to sell something, click SELL.

TOWN MENU: OTHER OPTIONS

The town menu has the following options:

- Cast spell
- Use item
- Printout
- Show party
- Save game

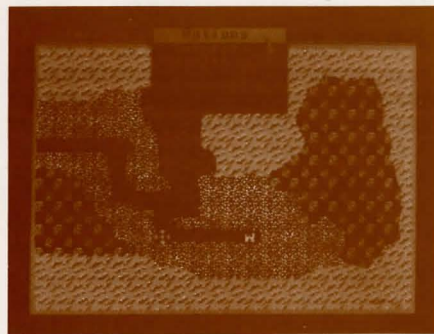
To leave a town, place the arrow on the road underneath the gate and click the mouse button.

ADVENTURE COMMANDS

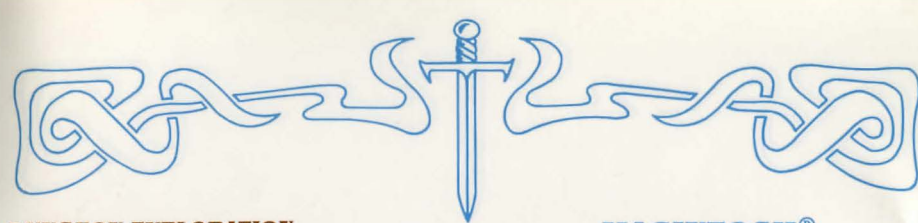
The party cursor may be moved by clicking and dragging it with the mouse. You may also use the cursor (arrow) keys. As the party explores, the following options may be utilized:

- Inspect
- Health
- Cast spell
- Use potion
- Look (in dungeon only)

The wilderness terrain will appear as follows:

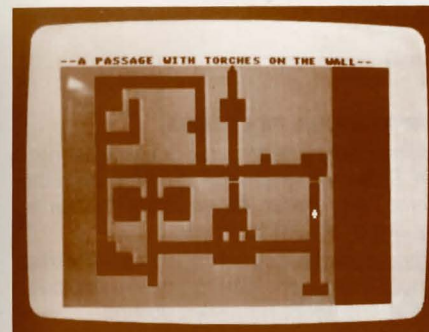


Note that all of the spells are referred to by name, not by number.



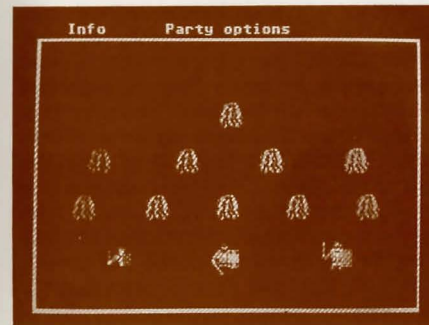
DUNGEON EXPLORATION

When the party nears a dungeon, you will be asked if you wish to enter. Click Yes or No. The dungeon map will be revealed as you explore various areas.



ENCOUNTER COMMANDS

Party options in an encounter may be selected by highlighting and clicking the party member and then clicking the appropriate option box.



SAVING THE GAME

To save a game, you must be in a town. Click Save under the Town Menu. You may also click on Auto Save to save the game each time you leave town.

UTILITY COMMANDS

Insert your game disk and turn on the computer. Select the UTILITIES icon. The following options will appear:

- Continue the game where you left off
- Initialize a blank disk and transfer characters
- Transfer characters from backup disk
- Start a new game from scratch

Select an option and follow the instructions on the screen.

MACINTOSH®

This section lists specific instructions for the 512K Macintosh computer. General rules for playing PHANTASIE and PHANTASIE II may be found in the preceding pages.

LOADING THE GAME

Insert the game disk in the computer's internal drive. Turn the power on. Click twice on the PHANTASIE icon.

For other Macintosh instructions referring to town menus, adventures, dungeon exploration, and combat, please refer to the Apple rules. Note that PHANTASIE is not mouse driven. You must use the keyboard to select options and move the cursor.

SAVING A GAME

To save a game, you must be in a town. Type S for Save. Make sure you have the Guild number of the characters you are saving; you will need to use them when you begin again.

UTILITY COMMANDS

Load the game. Select the UTILITIES icon by clicking the mouse button twice. You should see a display listing the following options:

- Continue the game where you left off
- Initialize a blank disk
- Transfer characters to a backup disk
- Transfer characters from backup disk
- Start a new game from scratch

Select an option and follow the instructions on the screen.



PHANTASIE II UPDATED RULES

PHANTASIE II utilizes the same rules as PHANTASIE I with the following changes. If you are not familiar with PHANTASIE rules, please read the enclosed rule book first and then also the version card for your computer.

CHANGES IN PHANTASIE II FROM PHANTASIE I DOCUMENTATION

- Scrolls (p. 19): In Gelnor (PHANTASIE I), there were 20 scrolls scattered about the land. In Fernorrah (PHANTASIE II), there are approximately 15.
- Rings and Wand (p. 19): In PHANTASIE I, 9 rings and a wand played an important role. In PHANTASIE II, amulets and an enchanted orb are the important artifacts.
- Combat/Rock Tossing (p. 10): The combat menu of PHANTASIE II contains a new feature: 7) Toss Rock. Rocks may be thrown at any enemy rank. Each character has an unlimited supply of rocks. Accuracy with this new weapon depends on the Toss Rock skill level of each individual character.

NEW TERRAIN FEATURES

- Molten Lava: Appears as an orange wave pattern. Extremely dangerous to travel through the intense heat; almost always causes damage to your characters. No encounters.
- Mist: Appears as an area of blue dots. A fine mist shrouds these areas, making travelling difficult. Undead and insect encounters abound.
- Dark Voids: Dark areas considered dangerous to travel through. Again, undead and insects flourish in these areas.

TRANSFERRING CHARACTERS FROM PHANTASIE I TO PHANTASIE II

Those of you who have played PHANTASIE I and still have your characters saved may use them in PHANTASIE II by selecting the Utilities function of the game and choosing "Transfer characters from Phantasie I to Phantasie II." Warning: This process will have the following adverse effects:

Your characters must pay all items except the wand of Nikademos. They must also pay the majority of their money and will lose most of the experience they have accumulated and all spells except for any divine spells (#55 and above). Wizards will keep spell #5 and Priests spell #1. If you decide to use your old characters in PHANTASIE II then "transfer characters" should be the first thing you do. At this point, you may wish to train the characters at the Guild as they will be at level 0 but have enough experience to improve. Any characters you have created beforehand on the PHANTASIE II disk will be erased by the transfer process.



PHANTASIE I CREDITS

Game Design & Programming
Winston Douglas Wood

Game Development
Keith Brors

Special Playtesting
Jana Elizabeth Wood, Christopher Todd Conley,
and Eric P. Leibnauer

Rule Book
Susan W. Lee-Merrow

PHANTASIE II CREDITS

Game Design & Programming
Winston Douglas Wood

Game Development
Eric Nickelson

Commodore 64 Version
LDW Software

Playtesters
Kurt Hasel, Arlon Harris,
and Russell Smith

Rulebook Editing
Cheryl Flink

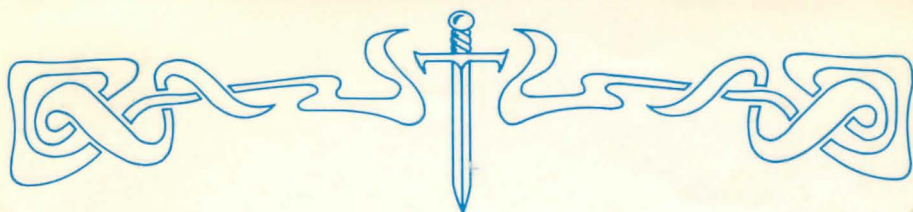
Art & Graphic Design
Louis Hsu Saekow, Kathryn Lee,
Ben Willemsen, and David Boudreau

Typesetting
Abra Type

Printing
A&a Printers and Lithographers

If you have any questions or problems regarding the program or game, please send a self-addressed, stamped envelope with your question to: STRATEGIC SIMULATIONS, INC., 1046 N. Rengstorff Ave., Mountain View, CA 94043. Or call our Hotline Number: (415) 964-1200 every weekday, 9 to 5 (P.S.T.).





Spells Table

Spell #	Magic Pts.	Name	Type*	Spell #	Magic Pts.	Name	Type*
1	1	HEALING 1	E	28	4	WEAKNESS 4	C/A
2	2	HEALING 2	E	29	1	BINDING 1	C/A
3	3	HEALING 3	E	30	2	BINDING 2	C/A
4	4	HEALING 4	E	31	3	BINDING 3	C/A
5	1	FIREFLASH 1	C/A	32	4	BINDING 4	C/A
6	2	FIREFLASH 2	C/A	33	1	MINDBLAST 1	C/A
7	3	FIREFLASH 3	C/A	34	2	MINDBLAST 2	C/A
8	4	FIREFLASH 4	C/A	35	3	MINDBLAST 3	C/A
9	1	QUICKNESS 1	C/P	36	4	MINDBLAST 4	C/A
10	2	QUICKNESS 2	C/P	37	1	FLAMEBOLT 1	C/A
11	3	QUICKNESS 3	C/P	38	2	FLAMEBOLT 2	C/A
12	4	QUICKNESS 4	C/P	39	3	FLAMEBOLT 3	C/A
13	1	STRENGTH 1	C/P	40	4	FLAMEBOLT 4	C/A
14	2	STRENGTH 2	C/P	41	1	CHARM	C/A
15	3	STRENGTH 3	C/P	42	2	SLEEP	C/A
16	4	STRENGTH 4	C/P	43	3	TELEPORTATION	C/A
17	1	PROTECTION 1	C/P	44	4	RESURRECTION	E
18	2	PROTECTION 2	C/P	45	1	NINJA 2	C/P
19	3	PROTECTION 3	C/P	46	2	FEAR	C/A
20	4	PROTECTION 4	C/P	47	3	DISSOLVE	C/A
21	1	CONFUSION 1	C/A	48	4	SUMMONS ELEMENTAL	C/P
22	2	CONFUSION 2	C/A	49	1	DISPELL UNDEAD	C/A
23	3	CONFUSION 3	C/A	50	2	NINJA 1	C/P
24	4	CONFUSION 4	C/A	51	3	AWAKEN	C/A
25	1	WEAKNESS 1	C/A	52	4	MONSTER EVALUATION	N/W/D
26	2	WEAKNESS 2	C/A	53	1	VISION	N/W
27	3	WEAKNESS 3	C/A	54	2	TRANSPORTATION	N/T

*Spell types include the following: E = Everywhere; C/P = Combat, passive (not cumulative); C/A = Combat, active (cumulative); N/W/D = Non-combat, wilderness or dungeon; N/W = Non-combat, wilderness only; N/T = Non-combat, town only.

Spells Available at Different Levels by Class

	LEVEL														
	1	2	3	4	5	6	7	8	9	10	11	12	13	14	15
WIZARD	5	13	6	7	21	25	8	34	11	35	15	36	12	16	47
	9	41	10	14	54	33	37	45	38	-	39	48	-	40	-
	-	-	-	-	-	50	46	51	-	-	-	-	-	-	-
PRIEST	1	21	2	25	3	18	23	4	7	8	31	24	32	20	48
	51	29	17	42	22	30	26	43	19	37	34	27	39	28	-
	53	-	49	-	-	-	-	-	44	-	-	-	-	-	-
RANGER	1	17	25	2	29	3	18	4	6	30	26	22	33	37	23
	5	-	49	-	52	-	51	-	21	-	42	-	44	-	-
MONK	5	50	6	45	53	7	13	8	33	9	34	14	35	10	36
	-	-	54	-	-	-	48	-	-	-	-	-	-	-	-
FIGHTER	-	-	52	-	-	9	-	-	13	-	-	11	-	-	15
THIEF	-	-	-	41	-	-	42	-	-	18	-	-	8	-	-