

QUEST FOR GLORY

SHADOWS OF DARKNESS

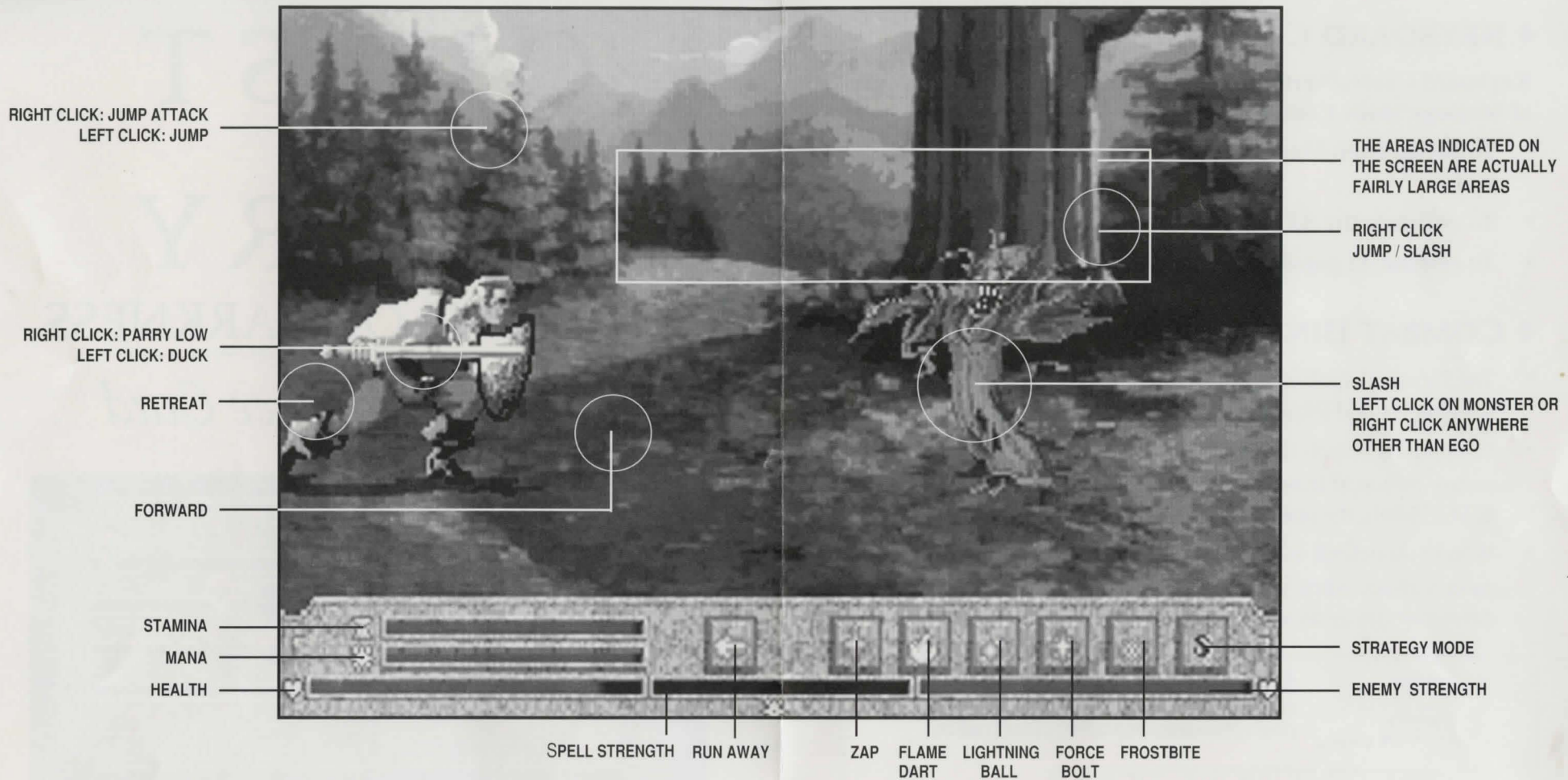
Combat Reference Card



◆ STRATEGY MODE CONTROL

Mouse Solution:

- To switch from manual to Fuzzy Logic AI: Press the S icon.
- To switch back to manual mode at any time: press the Right mouse button.
- To get to the AI control panel at any time: press the Left mouse button.
- In the AI control panel, press any button to exit the panel.



◆ NORMAL MOUSE

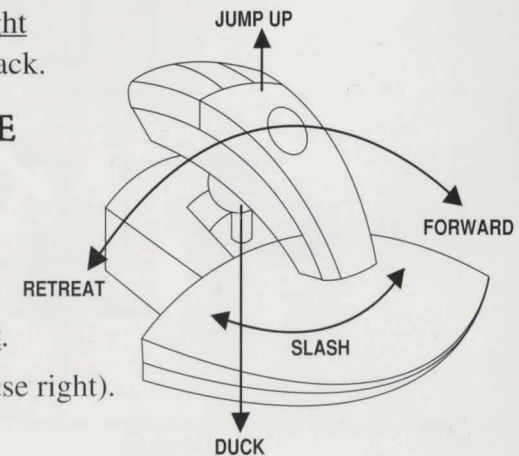
- To slash: click Right button on monster.
- To duck: click Left button on ego.
- To parry low: click Right button on ego.
- To jump: click Cursor above ego.
- To retreat jump: click Left button above ego.
- To move left: click Cursor to the left.
- To move right: click Cursor to the right.
- To cast spells: click on Spells buttons (hold for a powerful spell).

*more controls on strategy mode.

- To jump and slash: click Right button above monster.
- To throw a dagger: click Right anywhere on Combat Panel back.

◆ CYBER MAN MOUSE

- To jump: lift up.
- To duck: push down.
- To retreat: bank left.
- To move forward: bank right.
- To slash: swing (turn the mouse right).
- Plus Normal Mouse controls.



◆ KEYBOARD CONTROLS

Keyboard Controls are the same as the menu with the exception of Strategy Mode Control.

- To switch from Manual to Automatic or vice versa: press the F1 key.
- To switch to the AI panel: press the space bar.
- To exit the AI panel: press "ESC".

◆ COMBAT HINTS

- The Reversal spell is not effective in close combat. Aura, Resistance, and Protection do help.
- Clicking on a spell icon does nothing. You have to hold down the mouse button at least one second, then release. The longer you hold it down, the stronger the spell.
- When you defend or do nothing, you slowly recover stamina. You cannot attack when your Stamina drops to zero; you can only defend or run away until you recover Stamina.

