

S P A C E S H I P
WARLOCK™



MANUAL

Software License Agreement

The enclosed software program is licensed by Reactor Inc. to customers for their use only on the terms set forth below. Opening this package or using the enclosed CD-ROM indicates your acceptance of these terms.

Reactor Inc. hereby grants you a non-exclusive license to use the enclosed software subject to the terms and restrictions set forth in this Software License Agreement.

This CD-ROM is copyrighted, with all rights reserved. You may not copy or otherwise reproduce any part of the software, except that you may load the software into a computer as an essential step in executing the software on the computer. The original and any back-up copies of the software are to be used only in connection with a single computer. You may physically transfer the software from one computer to another, provided that the software is used in

connection with only one computer at a time. You may not transfer the software electronically from one computer to another over a network. You may not distribute copies of the software to others.

You may not use, copy, modify, transfer, sublicense, rent, lease, convey, translate, convert to any programming language or format or decompile or disassemble the software or any copy, modification or merged portion, in whole or in part, except as expressly provided in this license.



Table Of Contents

Software License Agreement 1

About This CD-ROM 3

Macintosh Instructions

Macintosh Installation Instructions . . 3

Macintosh Hardware Requirements . 3

The Classic Version 3

The AV compatible version . . . 3

Monitors 4

CD-ROM Drives 4

System Software 4

Macintosh Memory Requirements . . 4

System 6.0.x 4

System 7.x 5

Macintosh Start Up Procedure 5

System 6.0.x 5

System 7.x 6

IBM PC Instructions

IBM PC Installation Instructions . . . 7

PC Hardware Requirements 7

PC Memory Requirements 7

PC Start Up Procedure 8

Appendix

Warlock Map 9

Kroll Asteroid Map 10



About This CD-ROM

The Spaceship Warlock CD-ROM contains three (3) versions of Spaceship Warlock. They are:

- Spaceship Warlock, version 1.1.1 "Classic"
- Spaceship Warlock, version 1.1.2 "AV"
- Spaceship Warlock, version 1.1.3 "MPC"

Also included on this disc is the "Spaceship Warlock Movie Trailer" demo. There are three (3) versions of the demo on the CD-ROM. They are:

- Warlock Movie Trailer, version 1.1.1 "Classic"
- Warlock Movie Trailer AV, version 1.1.2 "AV"
- Warlock Movie Trailer MPC, version 1.1.3 "MPC"



Macintosh Installation

Macintosh Hardware Requirements

The Classic Version

Spaceship Warlock (version 1.1.1 "Classic") runs on the color Macintosh II family of computers including, but not limited to, the following:

- Macintosh II, IIx, IIcx, IIci, IIfx, IIsi
- Macintosh LC, LCII, LCIII
- Macintosh Centris 605, 610, 650
- Macintosh Performa
- Macintosh Quadra, 610, 650, 700, 800, 900, 950

The AV Compatible Version

Spaceship Warlock AV (version 1.1.2 "AV") runs on the color Macintosh AV family of computers including, but not limited to, the following:

- Macintosh Centris 660av
- Macintosh Quadra 660av
- Macintosh Quadra 840av

Monitors

Spaceship Warlock was specifically designed to run on 13" RGB color monitors at 640 X 480 pixel resolution and in 8 bit color (256 colors). While some Macintoshes with 12" monitors may be able to run Spaceship Warlock, vital areas will be lost off screen — rendering Spaceship Warlock un-playable.

CD-ROM Drives

Spaceship Warlock runs on all popular Macintosh compatible CD-ROM drives. However, access speeds on CD-ROM drives vary. Spaceship Warlock runs best on a CD-ROM drive with an access time of 380 milliseconds or faster.

System Software

Spaceship Warlock (version 1.1.1 "Classic") requires System 6.0.2 or greater. Spaceship Warlock AV (version 1.1.2 "AV") requires System 7.1 or greater. Users of systems 6.0.7 and 7.0 need to read the next sections on MEMORY REQUIREMENTS.

Macintosh Memory Requirements

Memory Requirements For Systems 6.0.2 Through 6.0.7

Spaceship Warlock (version 1.1.1 "Classic") running under Systems 6.0.2 through 6.0.7 requires a minimum of 4 megabytes of available RAM to run. If you have no more than 4 megabytes of available RAM, we recommend that you disable any memory-intensive enhancements in your system. Numerous fonts and inits take up RAM that Spaceship Warlock needs.

ATTENTION: Spaceship Warlock (version 1.1.1 "Classic") will not run reliably under multifinder.



Memory Requirements For System 7.0 Users

System 7.0 requires more memory than earlier systems. You will need at least 4 megs of available RAM to run Spaceship Warlock. "Available RAM" is RAM beyond what the system is using. Select "About This Macintosh" under the Apple menu before starting Spaceship Warlock to see how much RAM is available.



Macintosh Start Up Procedure For Systems 6.0.2 Through 6.0.7

- 1 - Insert the SPACESHIP WARLOCK CD-ROM into the CD caddy that came with your CD-ROM drive. Follow the instructions that came with your CD-ROM drive.
- 2 - Open up the MONITORS Control Panel and set it to 256 colors.
- 3 - (Optional) Set the volume level from your Control Panel under the Apple menu.
- 4 - Double-click the "Spaceship Warlock" icon to run.

NOTE: Do not attempt to run "Spaceship Warlock" on a Macintosh Quadra 660 AV or Quadra 840 AV computer. Doing so will cause Spaceship Warlock to run unreliably and most of the program's sound will be lost.

For System 7.0 Users

- 1 - Make any necessary adjustments recommended in the section "MEMORY REQUIREMENTS FOR SYSTEM 7.0 USERS".
- 2 - (MACINTOSH AV USERS skip this step). Open up the MEMORY Control Panel and turn off "32-Bit Addressing" and "Virtual Memory." Restart the computer. These must be turned off in order to run Spaceship Warlock v. 1.1.1 "Classic" only.
- 3 - Open up the MONITORS Control Panel and set it to 256 colors.
- 4 - Insert the SPACESHIP WARLOCK CD into the CD caddy that came with your CD-ROM drive (please follow the instructions that came with your CD-ROM drive).
- 5 - (Optional) Set the volume level from your Control Panel under the Apple menu.
- 6 - Double-click the "Spaceship Warlock" icon to run. CENTRIS/QUADRA 660 AV AND QUADRA 840 AV USERS - PLEASE NOTE: You must double-click the "Spaceship Warlock AV" icon to run.

NOTE: Do not attempt to run "Spaceship Warlock AV" on any Macintosh other than a Macintosh Centris/Quadra 660 AV or Quadra 840 AV computer. Doing so will cause Spaceship Warlock to run unreliably and the animation will slow down substantially.



IBM PC Installation Instructions

PC Hardware Requirements

Spaceship Warlock (version 1.1.3 "MPC")

IBM PC or 100% compatible 386 or higher computer, CD-ROM drive, Windows 3.1, Super VGA (640 X 480, 256 colors), and any one of the following sound cards:

- SoundBlaster® or 100% compatible card
- Pro Audio Spectrum™
- ThunderBoard™
- Tandy MPC sound

PC Memory Requirements

Spaceship Warlock (version 1.1.3 "MPC") requires a minimum of 4 megabytes of RAM to run on an IBM PC compatible computer.

NOTE: Recommended PC configuration; 50 MHz 486 with 8 MB RAM, Double speed CD-ROM drive, 550 KB of free conventional memory.

PC Installation Procedure

- 1 - Start up MS-Windows Operating System.
- 2 - Under the FILE menu, select NEW.
- 3 - The NEW PROGRAM OBJECT window will appear. Select PROGRAM GROUP and click OK.

- 4 - Type "SPACESHIP WARLOCK MPC" in the DESCRIPTION box and click OK.
- 5 - Select NEW under the FILE menu.
- 6 - Select PROGRAM ITEM in the NEW PROGRAM OBJECT window.
- 7 - Type "SPACESHIP WARLOCK" in the DESCRIPTION box.
- 8 - In the COMMAND LINE box type the following: "(letter of your CD-ROM drive)\SSWARLCK\SSWARLCK.EXE"
Please note the spelling.
- 9 - In the WORKING DIRECTORY box type "(letter of your CD-ROM drive)\SSWARLCK"
- 10 - Click the OK button.
- 11 - To run Spaceship Warlock double-click the Projector Icon labeled "SPACESHIP WARLOCK."

PC Start Up Procedure

- 1 - Start up MS-Windows Operating System.
- 2 - Double-click on "SPACESHIP WARLOCK" icon in the "SPACESHIP WARLOCK MPC" Window.

OPTIONAL PC START UP PROCEDURE

- 1 - Start up MS-Windows Operating System.
- 2 - Start up FILE MANAGER.
- 3 - Select "SSWARLCK.EXE" in the "SSWARLCK" directory on your CD-ROM drive.



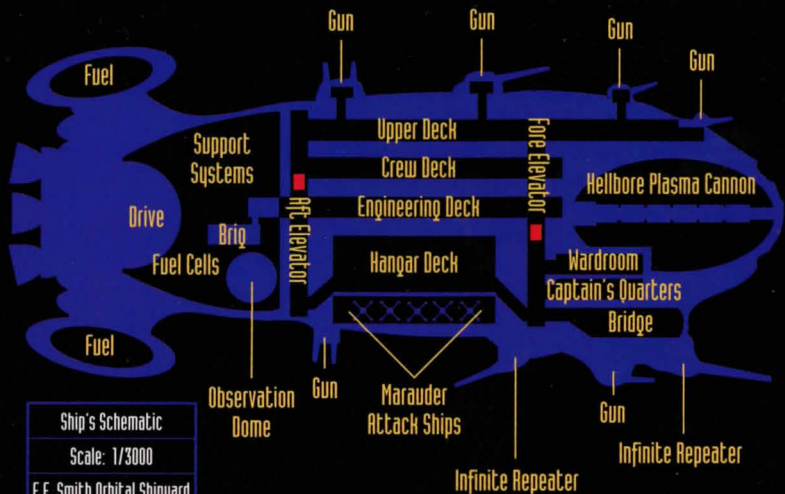
Appendix

Warlock Ship Map



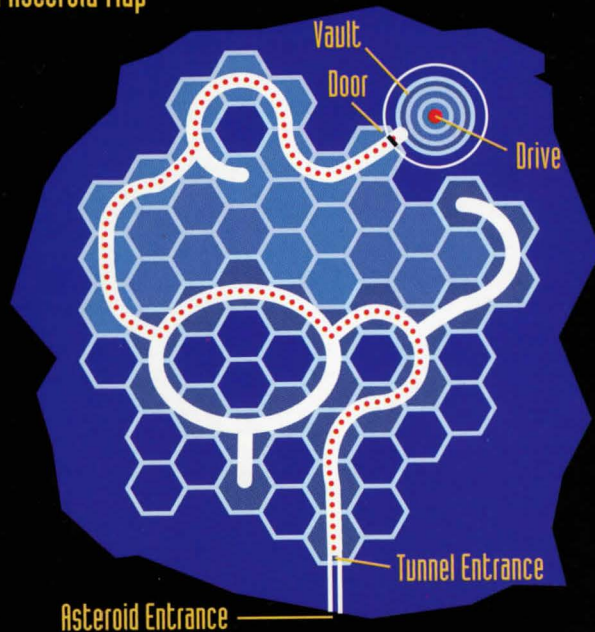
IMPERIAL TERRAN NAVY

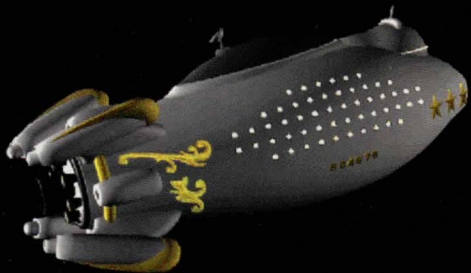
SS WARLOCK



Ship's Schematic
Scale: 1/3000
E.E. Smith Orbital Shipyard
Commissioned: 8/89

Kroll Asteroid Map





REACTOR



REACTOR INC
445 WEST ERIE
CHICAGO, IL 60610
TEL: (312) 573-0800