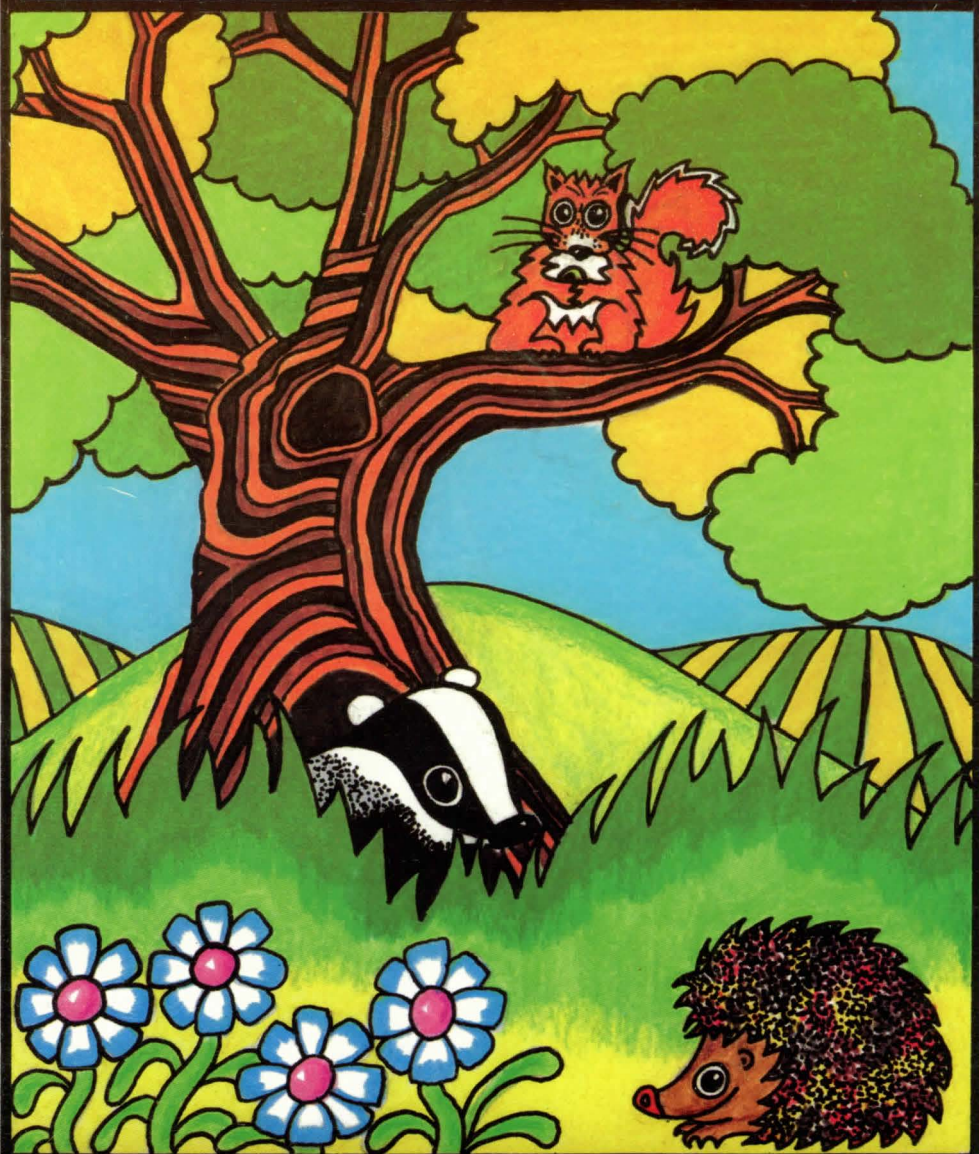


# THE NATURE PARK ADVENTURE



**SHERSTON SOFTWARE**

# **THE NATURE PARK ADVENTURE**

Illustrations and Text  
by  
Sue Hosler

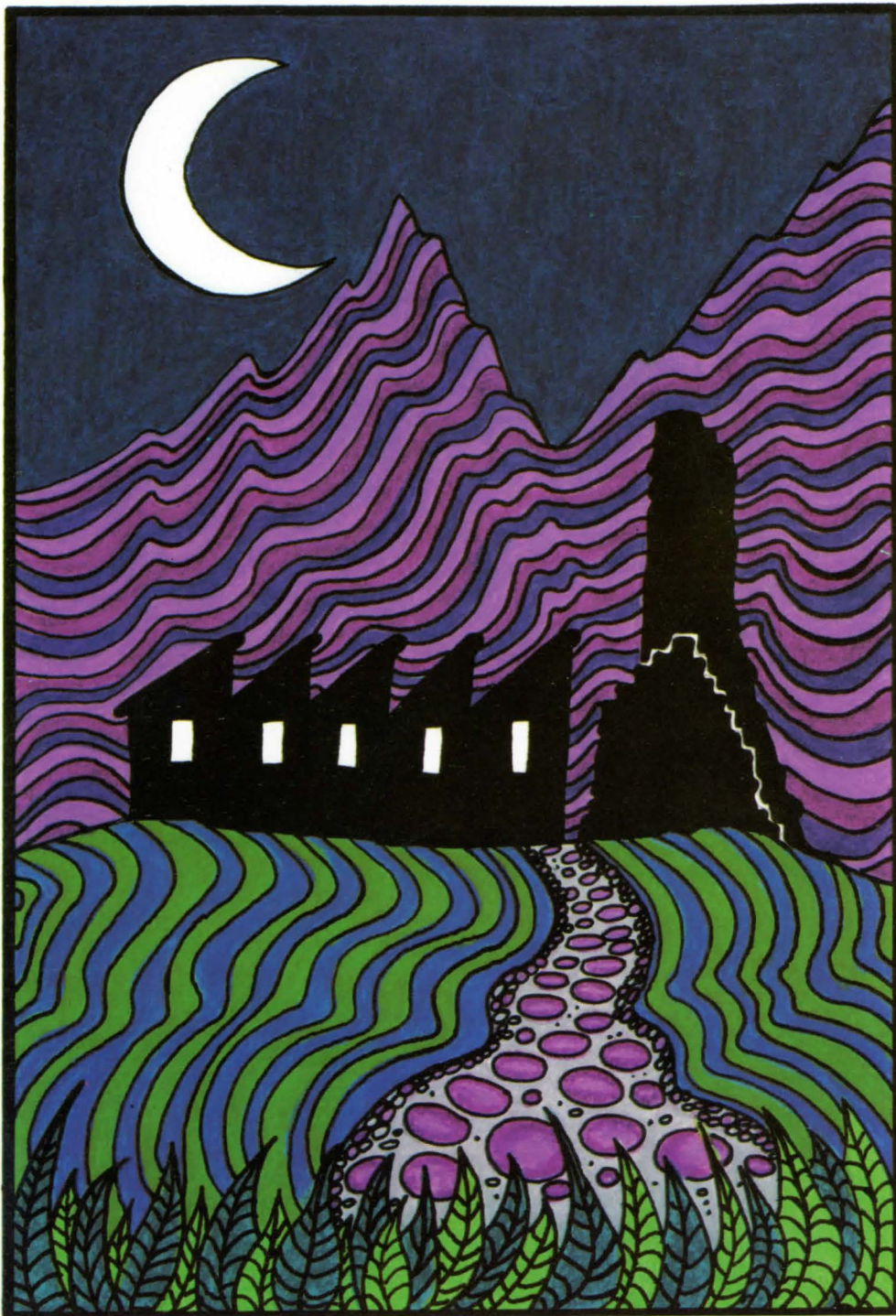
© Sherston Software 1987





This is the Nature Park. It is a beautiful place where many different kinds of animals and plants can be found. All the animals live happily in the park because the visitors are kind to them.





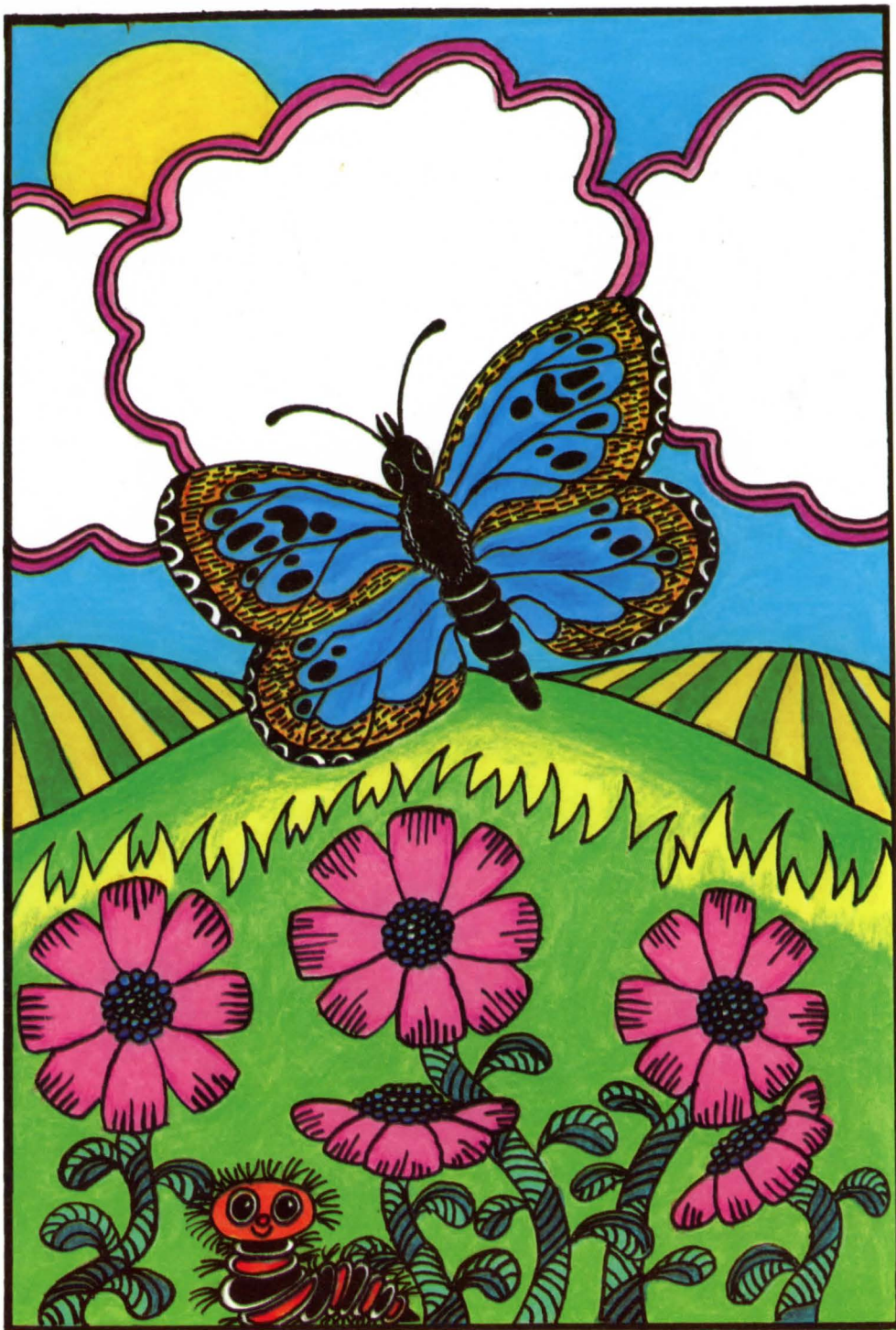
Surrounding the nature park are high mountains, vast moorlands, dark mysterious forests, and a rather ugly disused factory! Making their home inside the old factory are a trogg and two glob monsters.





These are greedy, slimy, unfriendly creatures who care for nobody except themselves. They are always looking for new ways to make money and can be really nasty at the same time.





Visitors to the park are usually able to see the rare blue butterflies that live around the hills. However, a few days ago they all disappeared!

They were taken by the trogg and the two glob monsters who intend to sell the butterflies to collectors.

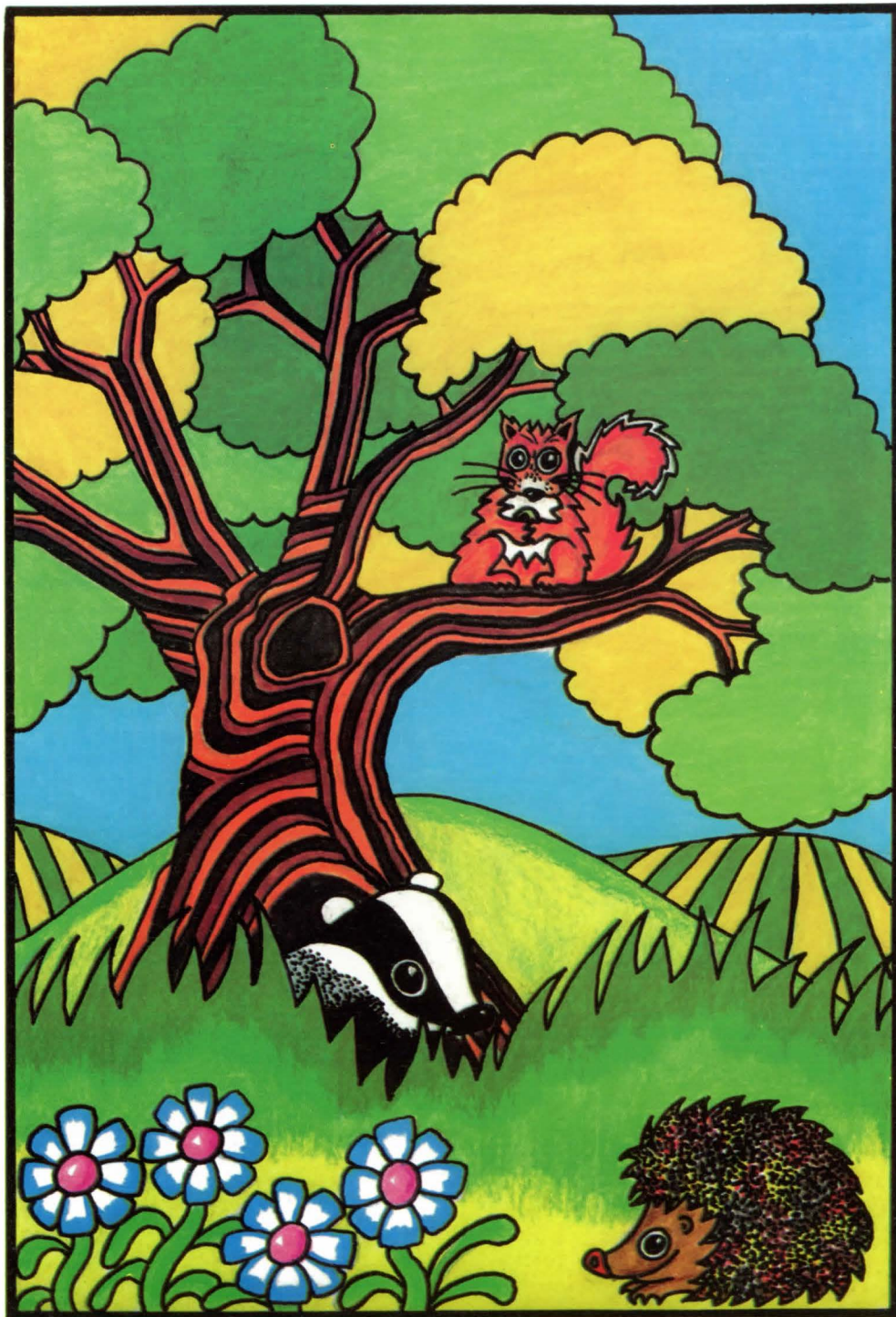




The visitors who come to the park are very sad because they can no longer see the blue butterflies. They are also worried about what may happen to them if they are not rescued soon.

Anyone who attempts to rescue these butterflies must be brave and fearless because the trogg and glob monsters will be watching out for them!





The children trying to rescue the butterflies will need to know something about the other animals found in this nature park. Some of the other animals may be able to help.

Good luck to all who try!



**Sherston Software**  
**Swan Barton, Sherston, Malmesbury, Wiltshire, England. SN16**  
**OLH ☎0666-840433. BTGold 72:MAG31653**