

CREATIVE SPARKS

FOR COMMODORE† 64

ICE PALACE



Fast Loading Cassette

by Paul Norris

The kingdom is under a spell of eternal darkness. Alone and vulnerable, you must ascend the Ice Palace, home of the wicked Ice Queen and break this evil spell.

To destroy the spell, you must collect the seven pieces of the Ice Crown which have been hidden throughout the Ice Palace. The crown once belonged to the benevolent King, your father, who was killed long ago by the Ice Queen. As you progress, the Queen's fury will grow and she will try harder to defeat you.

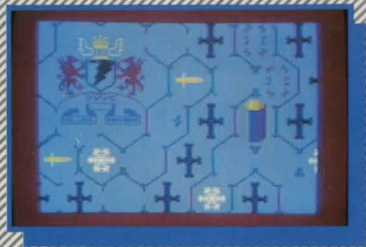
As you move through each of the seven levels of the palace, you must find objects, solve problems, and undertake many strange and difficult tasks, all the while fighting off the attacks of the Queen's servants, who will try their hardest to turn you to their evil ways.

The palace is made up of hexagonal rooms built entirely out of ice, but they are not always correctly aligned. This makes movement difficult, but you can invoke a spell of rotation to line up the exits.

Trust nothing and no-one. You are utterly alone!



It is Forever Winter



Getting Started

- 1 Make sure your C-64[†] computer is correctly connected to your television and cassette recorder.
- 2 Switch on your computer and television.
- 3 Insert your Ice Palace cassette into the cassette machine and ensure it is fully rewound.
- 4 Press the RUN/STOP key while holding down the SHIFT key.
- 5 The message PRESS PLAY ON TAPE will appear on the screen, when this happens, press the PLAY button and the game will automatically load.
- 6 After several minutes, the title screen will be displayed.
- 7 Plug the joystick into joystick port 1.
- 8 If the program does not load successfully, repeat the above from step 3. If the problem persists, refer to chapter 2 of the Commodore user manual.

The Game Play

Ice Palace is an action/adventure game which is played in real time over two separate screens. TO MOVE BETWEEN SCREENS PRESS "SPACE".

Action Screen

ROOMS

- Lake Rooms – Cannot be crossed.
- Sword Rooms – Contain various objects.
- Fire Rooms – Firestick can be replenished.
- Ice Rooms – May be crossed with difficulty.

The black Moline crosses indicate wastelands which cannot be crossed.

MOVEMENT

- Forward – Push joystick forwards.
- Rotate Prince – Push joystick left or right.
- Rotate Rooms – Pull joystick back to rotate all rooms around the prince. This will allow you to line up the various openings between the rooms.
- Firestick – Press fire button and guide to target.

The Ice Queen will despatch her various servants to turn you totally evil. Some of these may be destroyed, others, you can only fend off.

At the end of each wave a spinning cylinder will appear in one of the rooms. If you find and enter this, your level of goodness will increase. Occasionally the ghost of the old king will appear. Should he touch you, your goodness level will increase.

Adventure Screen

This screen gives the player his current status and allows tasks to be performed.

- Crown – Displays how much of the crown has been recovered.
- Firestick – Turns grey when it requires fuel.
- Skull – Eyes flash when you are under attack on the action screen.
- Candle – Shows time left.
- Your level of good/evil is displayed in the centre of the screen.
- The bottom half of the screen is split between, on the left, Actions and on the right, Objects.

[†] INDICATES TRADEMARK OF COMMODORE ELECTRONICS LTD.

To execute a command, select an action and an object as follows.

- Joystick left to choose an action
- Joystick right to choose an object
- Up/Down to select within either list

The fire button executes the action in white on the object in white.

Colour Code: Actions – Blue = needs object
Red = needs no object

Objects – Blue = You hold it
Red = In this room

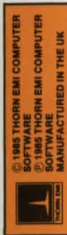
As each command is executed, a one line message will appear in the centre of the screen.

If you successfully solve the various problems and find a piece of the crown you will move onto the next level.

Software Club

It costs you nothing to join our software club but the benefits to you could be many. Simply fill in your name and address on the appropriate section of the inlay and post it off to us and we shall keep your name on our computer. You will then automatically receive, before the general public, news about our forthcoming new products along with special club offers and competitions. Remember it costs you nothing except five minutes of your time and a stamp.

*Creative Sparks, Thomson House, 296
Farnborough Road, Farnborough, Hants.*



WARNING: ALL RIGHTS OF THE PRODUCER AND THE OWNER OF THE WORK REPRODUCED RESERVED. UNAUTHORIZED COPYING, HIRING, LENDING, PUBLIC PERFORMANCE, RADIO OR TV BROADCASTING OR DIFFUSION OF THIS CASSETTE PROHIBITED.



Name

Address

Age Computer

C-64[†]

Ice Palace

TNCE 323

WRITTEN & DESIGNED BY PAUL NORRIS

**A REAL-TIME ACTION
ADVENTURE FEATURING
1200 LOCATIONS OVER 7
LEVELS OF PLAY.**

It is Forever Winter

The kingdom is under a spell of eternal darkness. Alone and vulnerable, you must ascend the Ice Palace, home of the wicked Ice Queen and break this evil spell.

JOYSTICK REQUIRED