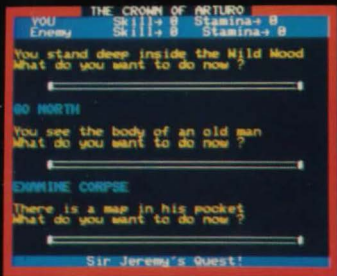


FOR USE ON

SHARP

117-7000

SERIES



CROWN OF ARTURO

This programme is written in the language called BASIC. To load the programme, follow the following procedure:

- (1) Switch on the computer and place the BASIC cassette in the tape deck.
- (2) Type **L** on the keyboard and then press the Carriage Return (marked **CR**).
- (3) As indicated on the screen, now press **PLAY** on the tape deck.
- (4) Wait until the **READY** signal appears on the screen (3 mins approx).
- (5) Rewind and remove the BASIC cassette.
- (6) Place your programme cassette in the tape deck.
- (7) Type **LOAD** (or press **SHIFT** and the blue function key marked **F5** at the same time) followed by Carriage Return (**CR**).
- (8) As requested on the screen, now press **PLAY** on the tape deck.
- (9) Wait for the **READY** signal to appear, rewind and remove the cassette.
- (10) Type **RUN** followed by **CR** or simply press the function key marked **F1**.

When you have finished with this cassette, the next programme which is written in BASIC may be loaded by repeating the steps above from (6).

It is not necessary to reload BASIC every time unless the computer has been switched off, or the **RESET** button has been pressed.

CROWN OF ARTURO

SOLO SOFTWARE

SHARP
MZ-700

SOLO SOFTWARE LTD · 95B BLACKPOLE TRADING ESTATE WEST
WORCESTER WR3 8TJ · TELEPHONE (0905) 58351