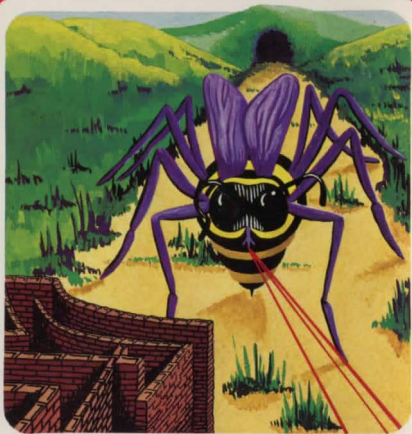


Spectrum 48K

BROODSLAYER



Charlie Charlie Sugar

© 1984 J. Sherry

Copies of this recording may only be made for the sole use of the purchaser unless written permission is obtained from the publisher.

CASES COMPUTER SIMULATIONS LTD., 14 Langton Way, London SE3 7TL

LOADING INSTRUCTIONS

The procedure for loading a program into your Spectrum is given in your manual. Please follow these steps for loading the program.

1. Connect the ear socket of the computer to the ear socket of your tape recorder.
2. Set the volume control as per Sinclair manual.
3. Adjust the tone control to maximum.
4. Type LOAD" ".
5. Start the tape recorder. The program will RUN automatically once loaded.

INSTRUCTIONS

1. OBJECTIVE

The player moves around a territory called the Outland. The territory is overrun by venomous creatures known as Broodlings. The aim of the game is to locate the nest from which these creatures come and to kill the Broodmother.

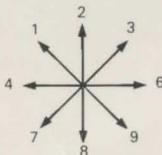
2. COMMANDS

(a) Movement

Movement around the map is by means of the cursor keys. Movement into a brick wall is suicide and will result in the game being restarted.

(b) The Broodshield

When attacked the player may defend himself by using the broodshield. He must key the appropriate number according to the direction of the attack.



The player has a limited time in which to react. Failure to react promptly results in him being hit by venom and losing power points. If a player's power level reaches zero, then he 'dies' and the game restarts. (The power level is shown on the top line of the screen display).

The broodshield cannot be used in the dark. However, Broodlings cannot fire across water or through brick.

(c) Other Commands

p = quit game and restart.

s = save data to play game at a later date.

3. THE KILL

When the Broodmother is found and confronted, the player must immediately strike by keying 's'.

4. OTHER FEATURES

Power can be restored to its original level of 100 by the player moving onto the "circles of healing" which are dotted around the Outland territory.

All found objects are assumed to be carried and are listed in the inventory alongside of the main map.

5. HINTS

If the player keeps to the edge of rivers at first he will be protected on one side from the Broodlings. Avoid dark pits and tunnels as they harbour Broodlings and lead to the Labyrinth of Chaos.

6. LOADING DATA PREVIOUSLY SAVED

When the program has loaded the player will be asked "Are you loading a saved game?" If the player answers 'y' he will be allowed to load the data previously saved.

BROODSLAYER



Broodslayer is an adventure game where the player moves across plains, rivers, forests, murky swamps, black pits, black tunnels and is constantly attacked by Broodlings with their deadly venom. However, the player can protect himself by using his Broodshield. His task is to find and kill the Broodmother in her nest.