

FULL THROTTLE™

MAC CD-ROM REFERENCE GUIDE

CONTENTS:

Your Full Throttle package should contain these important items:

- One Full Throttle MAC CD
- One User's Manual
- This Reference Guide
- Fun Stuff we threw in at the last minute

REVVING UP:

Starting Full Throttle is easy. Simply put the CD into the CD Drive and a window will come up with a few new icons, including a "Read Me" file (which should be read immediately), a folder with demos of some of our newest Macintosh games, and a Full Throttle icon. Double-click on the demo icons to view each of the demos. Double-click on the Full Throttle icon to start

playing the game. Note: If you are using a PowerPC-based machine Full Throttle will automatically take full advantage of its processing power. If you are running system software prior to 7.5, (look in "About this Macintosh" under the Apple menu if you're not sure) you need to open the "Items for your System Folder" folder, drag the icons you see onto your System Folder icon, and restart your computer prior to playing Full Throttle.

MEMORY:

Full Throttle requires a machine with at least 8 Megabytes of total memory (with 4.5 MB free memory.)

INPUT DEVICE:

Full Throttle may be played with a mouse or keyboard. The game does not have any direct support for joysticks.

PULL-DOWN MENUS:

To bring up the menu bar that allows you access to save games, preferences, etc., press the ESC key at any time during the game.

GAME

- To open a previously saved game, select OPEN GAME or press ⌘ O.
- To save a game select SAVE GAME or press ⌘ S.

- To skip a cut scene, select SKIP SCENE or press ⌘ . (period) or the ` key.
- To resume play after exploring the pull-down menus, select RESUME GAME or ⌘ R or click anywhere on the black screen.
- To configure Full Throttle for your system, select PREFERENCES or ⌘ P.
- To quit the game, select QUIT or press ⌘ Q.

Game	
Open Game...	⌘O
Save Game...	⌘S
Skip Scene	⌘.
Resume Game	⌘R
Preferences...	⌘P
Quit	⌘Q

VIDEO

Since Macintoshes have varying speed capabilities, you may wish to experiment with different screens to find the optimum setting for your machine. You may select from the following sizes/resolutions:

Small (⌘ A)

Interlaced (⌘ I)

Double size (⌘ D)

PowerPC only:

Graphic Smoothing (⌘ G)

Video	
Small	⌘A
Interlaced	⌘I
Double Size	⌘D

SOUND

You can adjust music, sound effects, text and voice as follows:

- To toggle music on/off, select MUSIC or ⌘ M

Sound	
✓ Music	⌘M
✓ Effects	⌘E
Toggle Text & Voice	⌘T
Text Only	
✓ Voice Only	
Text & Voice	

- To toggle sound effects on/off, select EFFECTS or ⌘ E.
- To toggle between voice and text, voice only, and text only, select TOGGLE TEXT AND VOICE (⌘ T) or choose the appropriate item from the bottom of the menu.

Note: Keyboard shortcuts for commands may be used at any time during gameplay.

HOT KEYS:

W = Walk to

P = Pick up/Punch

E = Examine

T = Talk to/Use mouth

K = Kick

I = Inventory

Spacebar = Pause Game

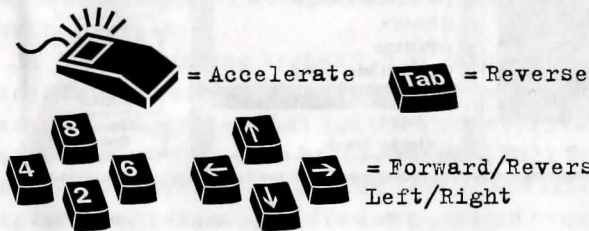
Tab = Inventory, choose weapon in Mine Road, reverse direction in Demolition Derby.

Return = Walk to/Activate/Use Verbs, use weapon in Mine Road, Accelerate in Demolition Derby.

4 6 8 2 OR **← → ↑ ↓** Directional keys for moving the cursor around the screen. First, move your cursor to where you want to go, then hit the RETURN key.

DEMOLITION DERBY

Use your mouse or arrow keys to steer AND accelerate your car.



MINE ROAD

When Ben is on his bike in an interactive highway sequence, you can swerve left or right by moving the mouse in those directions. If you want to select a weapon, press the TAB key. If you want to use a weapon, click the mouse button. If at first you don't succeed, punch, punch, punch. You can always try a bigger weapon.

Tab = Select Weapon

Mouse button = Use weapon, move left or right

← = Move left

→ = Move right

Return = Use Weapon

A NOTE ABOUT SAVE GAMES



When you save a game, you will be prompted to choose a location and name for your save game. Once you've saved it, you may launch the game again directly from that save game, without having to run the Throttle application first. Simply double-click on the game you'd like to play. Note: even though you're playing a game that has been "saved" to your hard drive, you must still have the Throttle CD in your CD drive in order to play.

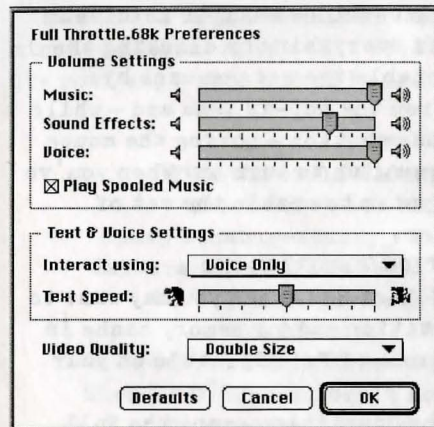
PREFERENCES

As you change your preferences for sound, text speed, etc. for the game, these preferences will automatically be saved to your Preferences folder on your hard drive. These preference settings are independent of your save games.

TROUBLESHOOTING

MEMORY: Full Throttle requires at least 4.5 MB of memory to run. In order to run it on some 8MB systems, you may need to turn off a number of extensions and/or control panels.

If you are running System 7.5 or later: Use the Extensions Manager control panel that shipped with your system. It is suggested that you turn off everything that isn't vital and restart before running Full Throttle. To do this conveniently, first save your current configuration by choosing Save Set... from the pop-up menu



above the list. Name this set "Standard." Next, turn off everything in Extensions Manager except your CD-ROM driver (either the Apple CD-ROM extension or your particular third-party driver) and the Sound Manager (if present). Now, choose Save Set again, naming this set "Full Throttle." Now,

before you run Full Throttle, simply choose your Full Throttle set from the pop-up menu in Extensions Manager and restart your system. To return to your usual setup, choose "Standard" from the pop-up menu and restart again.

If you are running a System version prior to 7.5, you can do exactly the same thing with the Extensions Manager control panel that you copied to your System Folder when you installed Full Throttle. You can use the pop-up menu below the extension list to save extension sets, just as described above. However, properly enabling a set with this version of Extensions Manager involves two steps. First, turn off everything by clicking the "All Off" button. Then, enable the set you want by selecting "Enable Set" from the pop-up menu and — while still holding down the mouse button — moving the mouse over the name of the set you wish to turn on. When you've finished, restart your system to enable the set of extensions you have chosen.

INCREASING MEMORY PARTITION/MEMORY CACHE

If you have MORE THAN 8 MB of RAM, then you may want to increase your memory partition and/or memory cache in order to enhance performance of Full Throttle on your machine.

1) To increase the memory partition, copy the Full

Throttle icon to your hard drive, then select the icon and choose Get Info from the File Menu. You will then see a window in which you may increase the preferred memory size. Feel free to experiment with this partition to find the optimum setting for your configuration.

2) To increase the memory cache, simply open the memory control panel in your System Folder and increase the preferred cache. Again, feel free to experiment with this cache to find the best setting for your configuration. Be sure to reset your memory cache to the preferred setting when you have finished playing the game.

Be sure to read the READ ME. There is a lot of last-minute information in this file that will help you get the most enjoyment out of Full Throttle.

* * *

FULL THROTTLE MACINTOSH VERSION

Aaron Giles : Lead Programmer

Casey Donahue-Ackley : Production Manager

Barbara Gleason : Product Marketing Manager

S.C.U.M.M. guru : Aric Wilmunder

Lead Tester : Dana Fong

Testers : Erik Ellestad, Albert Chen,
Theresa O'Connor, Scott Douglas, Dan Pettit,
Rachael Bristol and Chris Snyder

ANY QUESTIONS?

Call our Technical Support line at:

415-507-4545

When you call please be sitting in front of your computer with paper and pen, and gather as much pertinent information about your computer as you can assemble: make, model, peripherals, RAM and disk size, the version of the system software being used, the title and version of the game, and a detailed description of the problem. You can also write to Technical Support at: LucasArts Entertainment Co.

P.O. Box 10307, San Rafael, CA 94912

Product Support hours are 8:30 am to 6:00 pm Pacific Standard Time, Monday-Thursday; 8:30 am to 5:00 pm Pacific Standard Time, Friday.

WHERE TO FIND US ONLINE

LucasArts Website

<http://www.lucasarts.com>

CompuServe

Game Publishers Forum A

(GO GAMAPUB) section 7

Or send e-mail to ID#

75300,454

America Online

Keyword "LucasArts"

Or send e-mail to LUCASARTS3

Internet E-Mail

75300.454@compuserve.com

Or send e-mail to

LucasArts3@AOL.com

Technical Support FAX

415-507-0300

Technical Support BBS

415-507-0400

NEED MORE HINTS?

Please do not call Technical Product Support for HINTS, as they do not give hints over the phone. However, you may call our 24-hour automated hint line at:

1-900-740-JEDI

(1-900-740-5334)

This service costs 75 cents a minute, and you must be over 18 years old or have your parents' permission to call.

WOULD YOU LIKE TO ORDER GAMES, STRATEGY GUIDES
AND OTHER NEAT STUFF THROUGH THE MAIL?

1-800-782-7927

in the United States

1-408-642-0212 International * 1-800-828-7927 Canada
or FAX: 408-644-2025 United States and International
Mailing Address: P.O. Box 4976, Salinas, CA 93912.



12

FULL THROTTLE TM and © 1994 LucasArts Entertainment Company. All Rights Reserved. Used Under Authorization. The LucasArts logo is a registered trademark of LucasArts Entertainment Company. LucasArts, INSANE, SCUMM and iMUSE are trademarks of LucasArts Entertainment Company. iMUSE U.S. Patent No. 5,315,057. All other trademarks are hereby acknowledged as the proprietary property of their respective owners.

LucasArts Entertainment Company,
P.O. Box 10307, San Rafael, CA 94912

1072108