

C= COMMODORE

VIC=20

THE ONE TO GROW ON.

THE ONE TO GROW ON.

THE ONE TO GROW ON.

THE ONE TO GROW ON.

THE ONE TO GROW ON.

THE ONE TO GROW ON.

THE ONE TO GROW ON.

THE ONE TO GROW ON.



C= commodore
COMPUTER



THE FIRST FULL FEATURE COLOR COMPUTER UNDER \$400.

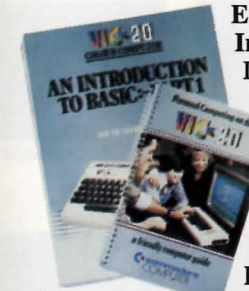
A computer like this would have been science fiction a few years ago. Now it's a reality. It's the new VIC-20™ by Commodore, a full-fledged, expandable color computer for under \$400. And it's so easy to use, you can be writing your first program in 15 minutes.

Great video games plus a fun learning tool: Everybody loves video games and the Commodore VIC-20 has some of the best. But the VIC is a real *computer*, not just a game machine. It has a full typewriter-style keyboard, graphics, sound, color and a wide range of add-on accessories. And... it uses the same computer language as the Commodore PET®, Canada's most widely

used educational computer, so students who use the PET in school can practice computing at home on the VIC.

The VIC-20's place is in the home... school... and office: As a true computer, the Commodore VIC-20 has many practical applications, from financial planning and word processing to helping students with their homework. Hook up our VIC graphic printer and you can print anything which is displayed on the screen. Connect our VICMODEM™ and you can use your phone to get services like stock reports, UPI newswire stories, research information... a whole "library" of information!

HANDY HOW-TO GUIDES:



Easy-To-Follow Instruction Booklet: It's free with every VIC-20 computer. This 161-page guide tells you everything you need to know about your VIC-20 and how to operate it.

Introduction to BASIC Programming: A five-part series of tapes and manuals provides an easy self-teaching course in computer programming. VL102 Introd. to Basic Pt.I, VL103 Introd. to Basic Pt.II

FULL RANGE OF PERIPHERALS:

The VIC-20's capabilities can be increased through a wide variety of add-on accessories which tailor the system to any need or budget. They include:



COMMODORE DATASETTE: The Datasette Tape Recorder lets you store your own computer programs on standard audio cassette tapes or use Commodore's low-priced pre-recorded tape programs. VIC 1530



VICMODEM™: The lowest priced modem in the industry lets you communicate with outside data sources through your telephone. VIC 1600



VIC GRAPHIC PRINTER:

Economical dot matrix printer makes paper copies of BASIC programs, letters, business data and graphic displays. Connects directly to the VIC. VIC-1525E



VIC SINGLE DISK DRIVE:

Fast, high capacity storage and retrieval of data on standard 5¼ inch floppy diskettes. Stores up to 170K on each diskette. With read/write compatibility with Commodore PET/CBM™ computer systems. VIC 1541

VIC GAME CONTROLLERS:

Joysticks and paddles will provide hours of recreational enjoyment. VIC 1311 (joystick), VIC 1312 (Two player game paddles).

SPECIAL CARTRIDGES:

VIC 3K MEMORY EXPANDER CARTRIDGE:

Plugs directly into the VIC's expansion port. Expands memory to 8K RAM total. VIC 1210

VIC 8K MEMORY EXPANDER CARTRIDGE:

8K RAM memory expansion cartridge plugs directly into the VIC. VIC 1110

VIC-20 SUPER EXPANDER:

3K RAM memory expansion, high resolution graphics plotting, color, paint and sound commands. Graphic, test, multicolor and music modes, programmable function key editing and more. VIC 1211A

PROGRAMMERS AID CARTRIDGE:

More than 20 new BASIC commands help new and experienced programmers write and edit programs faster and more efficiently. Programmable function key editing included. VIC 1212

VIC-20

THE LEADING MANUFACTURER OF A FULL RANGE OF DESKTOP COMPUTERS:

- Established almost a quarter of a century ago, Commodore is an international company specializing in high technology.
- Commodore is the only personal computer company with a full line of computers—from the \$400.00 VIC-20 to the economical PET and CBM to our incredible new Super-PET computer, offering the capabilities of a mainframe system at the low cost of a desktop computer.
- Commodore is the only personal computer company that manufactures its own microprocessors—the “heart” of all personal computers. As a result, Commodore’s computer system is more affordable.
- Commodore’s proprietary “6502” microprocessor is so technologically advanced and reliable that it’s used in many competitive systems.
- With over a million computers sold worldwide, Commodore is proven for performance and reliability.

 **commodore**
COMPUTER

Commodore Business Machines,
3370 Pharmacy Avenue, Agincourt, Ontario, Canada M1W 2K4
(416) 499-4292

SOFTWARE MAKES THE DIFFERENCE

The key to any computer is its software . . . the pre-recorded programs you buy on cartridge, tape cassette and diskette, which actually make the computer "compute." The VIC-20 comes with a wide selection of over 40 programs on plug-in cartridge or tape cassette, including home calculation programs, math improvement programs and arcade games such as Omega Race, Gorf and Clowns.

GAMES



VIC SUPER ALIEN
VIC 1906



MIDNIGHT DRIVE/
ROAD RACE VIC 1909



JUPITER LANDER
VIC 1907



SUPERSLOT VIC 1904

(Sample Illustrations include:)

FIVE ADVENTURE GAMES:



ADVENTURE LAND! VIC 1914
PIRATE COVE VIC 1915 • THE COUNT
VIC 1917 • VODOO CASTLE VIC 1918
• MISSION IMPOSSIBLE VIC 1916



SARGON II CHESS
VIC 1919



DRAW POKER VIC 1908



RADAR RATRACE
VIC 1910



CAR CHASE



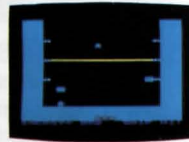
VIC 21—CASINO-
STYLE BLACKJACK



VIC AVENGER
VIC 1901



BIORHYTHM/
COMPATABILITY

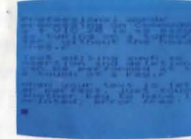


BLUE MEANIES FROM
OUTER SPACE

HOME CALCULATION PACK VT 107



PERSONAL FINANCE
I AND II



VIC TYPEWRITER-
WORD PROCESSOR &
TYPING PRACTICE



EXPENSE CALENDAR

RECREATION PACK VT 106A



SPACEMATH



LOAN & MORTGAGE
CALCULATOR



HOME INVENTORY



SLITHER/
SUPERSLITHER



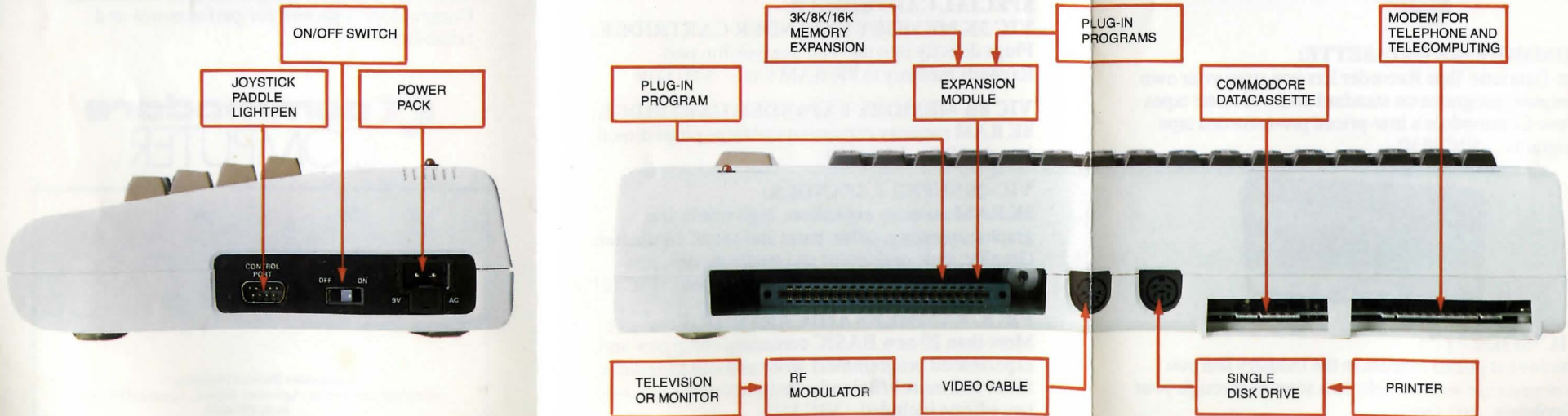
VIC-20 SUPER
EXPANDER VIC 1211A



PERSONAL FINANCE

UTILITY

VIC-20 EXPANSION CAPABILITIES



VIC-20

SPECIFICATIONS:

Although the VIC-20 can be easily managed by the first-time user, it can quickly become a sophisticated computer. The basic technical specifications of the VIC-20 are:

- 5K RAM expandable up to 32K
- RS232C interface capability
- 8 border colors, and 16 screen colors
- 8 screen character colors generated directly from the keyboard
- 4 tone generators, covering 5 octaves including a "white noise" generator for sound effects
- 22 characters wide by 23 lines deep screen display
- 88 character program line length
- 64 ASCII character set, upper and lower case alphabet, numerics, and business/calculation symbols
- Full PET-type graphics character set generated directly from keyboard
- High resolution graphics capability
- 176 x 184 pixel (32,384 in total) maximum resolution
- 4 programmable function keys
- Automatic repeat on space bar, insert, delete, and cursor control keys (other keys can be programmed to repeat)

VIC-20 VS. THE VIDEO GAMES

Product Features	VIC-20	Atari VCS [®]	Mattel Intellivision [®]
Under \$400	YES	YES	YES
Plays Cartridge Games	YES	YES	YES
Also Works With Disks and Cassettes	YES	NO	NO
Full-Size Computer Keyboard	YES	NO	NO
BASIC Computing Language Built-In	YES	NO	NO
Expandable Memory Capability	YES	NO	NO
Self-Teaching Programming Manual	YES	NO	NO
Works With Printer	YES	NO	NO
A Real Computer	YES	NO	NO